

CSRP1 Polyclonal Antibody

Catalog number: 13432-1-AP

Size: 87 µg/150 µl

Source: Rabbit

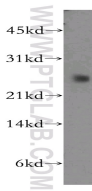
Isotype: IgG

Synonyms:

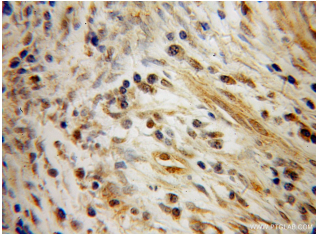
CSRP1; CRP; CRP1; CSRP;

CYRP; D1S181E;

DKFZp686M148



human stomach tissue were subjected to SDS PAGE followed by western blot with 13432-1-AP(CSRP1 Antibody) at dilution of 1:800



Immunohistochemistry of paraffin-embedded human cervical cancer using 13432-1-AP(CSRP1 Antibody) at Dilution 1:100 (under 40x lens)

Applications

Tested applications:	ELISA, WB, IHC
Species specificity:	Human, mouse, rat; other species not tested.
Positive WB detected in:	Human stomach tissue
Calculated CSRP1 MW:	193aa,21kd
Observed CSRP1 MW:	21kd
Positive IHC detected in:	Human cervical cancer
Recommended dilution:	WB: 1:200-1:2000 IHC: 1:50-1:200

Application key: WB = Western blotting, IHC = Immunohistochemistry, IF = Immunofluorescence, IP = Immunoprecipitation, FC = Flow cytometry

Immunogen information

Immunogen:	Ag4236
GenBank accession number:	BC032493
Gene ID (NCBI):	1465
Full name:	Cysteine and glycine-rich protein 1

Product information

Purification method:	Antigen affinity purification
Storage:	PBS with 0.02% sodium azide and 50% glycerol pH 7.3. Store at -20°C.