

Podoplanin Polyclonal Antibody

Catalog number: 11629-1-AP

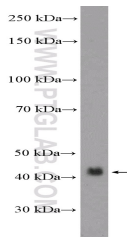
Size: 22 µg/150 µl

Source: Rabbit

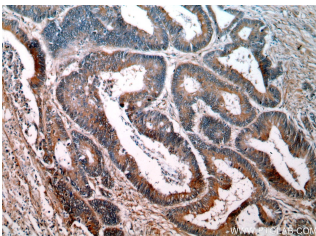
Isotype: IgG

Synonyms:

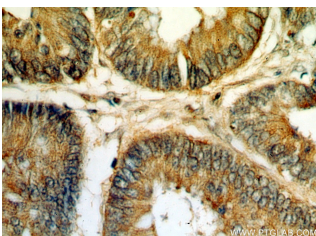
PDPN; AGGRUS, D2 40, D2 40, M2A, Glycoprotein 36, GP36, Gp38, GP40, HT1A 1, M2A, OTS8, PA2.26, PA2.26 antigen, PDPN, podoplanin, PSEC0025, T1 alpha, T1A, T1A 2



HEK-293 cells were subjected to SDS PAGE followed by western blot with 11629-1-AP (PDPN, D2-40, M2A Antibody) at dilution of 1:1000



Immunohistochemical of paraffin-embedded human colon cancer using 11629-1-AP (PDPN, D2-40, M2A antibody) at dilution of 1:50 (under 10x lens)



Immunohistochemical of paraffin-embedded human colon cancer using 11629-1-AP (PDPN, D2-40, M2A antibody) at dilution of 1:50 (under 40x lens)

Background

M2A(D2-40) antigen is a previously identified marker for CIS and seminoma. M2A (D2-40) antigen has been identical to PDPN.(PMID: 16736189). PDPN, also named as GP36, Gp38, GP40, HT1A-1, OTS8, PA2.26, T1A and T1A-2, has a function in developing testis, most likely at the level of cell-cell interactions among pre-meiotic germ cells and immature Sertoli cells. It may be involved in cell migration and/or actin cytoskeleton organization. When expressed in keratinocytes, PDPN induces changes in cell morphology with transfected cells showing an elongated shape, numerous membrane protrusions, major reorganization of the actin cytoskeleton, increased motility and decreased cell adhesion. It is required for normal lung cell proliferation and alveolus formation at birth. PDPN induces platelet aggregation. It does not have any effect on folic acid or amino acid transport and does not function as a water channel or as a regulator of aquaporin-type water channels. The antibody is specific to Podoplanin.

Applications

Tested applications:	ELISA, IHC, WB, FC
Cited applications:	IHC
Species specificity:	Human; other species not tested.
Cited species:	Human
Calculated Podoplanin MW:	17 kDa, 25 kDa
Observed Podoplanin MW:	43 kDa
Positive WB detected in	HEK-293 cells, human placenta tissue, Transfected HEK-293 cells
Positive IHC detected in	Human colon cancer tissue, human lung tissue, human skeletal muscle tissue
Positive FC detected in	HUVEC cells
Recommended dilution:	WB: 1:500-1:5000 IHC: 1:20-1:200 FC: N/A

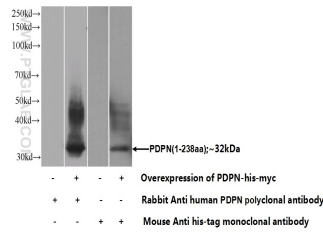
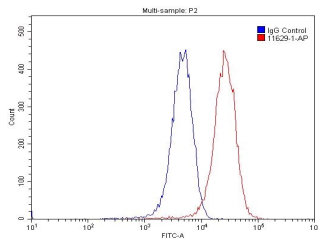
Application key: WB = Western blotting, IHC = Immunohistochemistry, IF = Immunofluorescence, IP = Immunoprecipitation

Immunogen information

Immunogen:	Ag2201
GenBank accession number:	BC022812
Gene ID (NCBI):	10630
Full name:	Podoplanin

Product information

Purification method:	Antigen affinity purification
Storage:	PBS with 0.1% sodium azide and 50% glycerol pH 7.3. Store at -20°C.



1X10⁶ HUVEC cells were stained with 0.2ug PDPN,D2-40,M2A antibody (11629-1-AP, red) and control antibody (blue). Fixed with 4% PFA blocked with 3% BSA (30 min). Alexa Fluor 488-conjugated AffiniPure Goat Anti-Rabbit IgG(H+L) with dilution 1:1500.

Transfected HEK-293 cells were subjected to SDS PAGE followed by western blot with 11629-1-AP(PDPN,D2-40,M2A Antibody) at dilution of 1:1000