

Entactin Polyclonal Antibody

Catalog number: 13766-1-AP

Size: 20 µg/150 µl

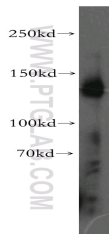
Source: Rabbit

Isotype: IgG

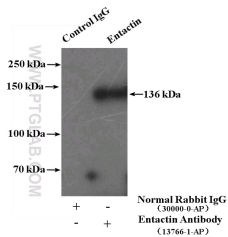
Synonyms:

NID1; Entactin, NID, NID 1,

NID1, Nidogen 1



human placenta tissue were subjected to SDS PAGE followed by western blot with 13766-1-AP(NID1 antibody) at dilution of 1:200



IP Result of anti-NID1 (IP:13766-1-AP, 4ug; Detection:13766-1-AP 1:200) with human placenta tissue lysate 4000ug.

Applications

Tested applications:	ELISA, WB, IP
Species specificity:	Human, Mouse, Rat; other species not tested.
Calculated Entactin MW:	1247aa, 136 kDa
Observed Entactin MW:	136 kDa
Positive WB detected in:	Human placenta tissue, mouse heart tissue
Positive IP detected in:	Human placenta tissue
Recommended dilution:	WB: 1:200-1:2000 IP: 1:200-1:1000

Application key: WB = Western blotting, IHC = Immunohistochemistry, IF = Immunofluorescence, IP = Immunoprecipitation

Immunogen information

Immunogen:	Ag4749
GenBank accession number:	BC045606
Gene ID (NCBI):	4811
Full name:	Nidogen 1

Product information

Purification method:	Antigen affinity purification
Storage:	PBS with 0.02% sodium azide and 50% glycerol pH 7.3. Store at -20°C.