

## RPS3 Polyclonal Antibody

Catalog number: 11990-1-AP

Size: 24 µg/150 µl

Source: Rabbit

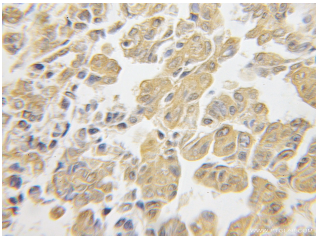
Isotype: IgG

Synonyms:

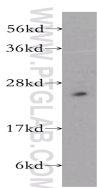
RPS3; 40S ribosomal protein

S3, FLJ26283, FLJ27450,

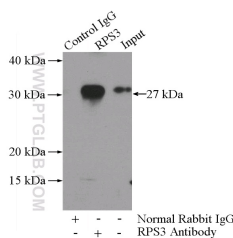
ribosomal protein S3, RPS3



Immunohistochemical of paraffin-embedded human ovary tumor using 11990-1-AP(RPS3 antibody) at dilution of 1:50 (under 10x lens)



mouse testis tissue were subjected to SDS PAGE followed by western blot with 11990-1-AP(RPS3 antibody) at dilution of 1:500



IP Result of anti-RPS3 (IP:11990-1-AP, 3µg; Detection:11990-1-AP 1:600) with mouse testis tissue lysate 4000µg.

### Background

40S ribosomal protein S3 (RPS3), also named as SW-cl.26, is a 243 amino acid protein, which contains one KH type-2 domain and belongs to the ribosomal protein S3P family. RPS3 localizes in the cytoplasm. RPS3 is identified in a IGF2BP1-dependent mRNP granule complex, which contains untranslated mRNAs. RPS3 plays a role in repairing various DNA damage acting as a repair UV endonuclease. Nuclear accumulation of RPS3 results in an increase in DNA repair activity to some extent, thereby sustaining neuronal survival.

### Applications

Tested applications:	ELISA, WB, IHC, IP
Cited applications:	IF, IHC, WB
Species specificity:	Human, Mouse; other species not tested.
Cited species:	Human, mouse
Calculated RPS3 MW:	26.7 kDa
Observed RPS3 MW:	26.7 kDa
Positive WB detected in	Mouse testis tissue, Neuro-2a cells, PC-12 cells
Positive IP detected in	Mouse testis tissue
Positive IHC detected in	Human ovary tumor tissue
Recommended dilution:	WB: 1:200-1:2000
	IP: 1:200-1:2000
	IHC: 1:20-1:200

Application key: WB = Western blotting, IHC = Immunohistochemistry, IF = Immunofluorescence, IP = Immunoprecipitation

### Immunogen information

Immunogen:	Ag3918
GenBank accession number:	BC034149
Gene ID (NCBI):	6188
Full name:	Ribosomal protein S3

### Product information

Purification method:	Antigen affinity purification
Storage:	PBS with 0.1% sodium azide and 50% glycerol pH 7.3. Store at -20°C.