

ASPRV1 Polyclonal Antibody

Catalog number: 13052-1-AP

Size: 53 µg/150 µl

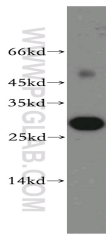
Source: Rabbit

Isotype: IgG

Synonyms:

ASPRV1; MUNO; SASP;

SASPase; Taps



mouse skin tissue were subjected to SDS PAGE followed by western blot with 13052-1-AP(ASPRV1 Antibody) at dilution of 1:1000

Applications

Tested applications:	ELISA, WB
Species specificity:	Human, mouse, rat; other species not tested.
Positive WB detected in:	Mouse skin tissue
Calculated ASPRV1 MW:	343aa,37kd
Observed ASPRV1 MW:	28kd,37kd
Recommended dilution:	WB: 1:500-1:5000

Application key: WB = Western blotting, IHC = Immunohistochemistry, IF = Immunofluorescence, IP = Immunoprecipitation, FC = Flow cytometry

Immunogen information

Immunogen:	Ag3719
GenBank accession number:	BC031997
Gene ID (NCBI):	151516
Full name:	Aspartic peptidase, retroviral-like 1

Product information

Purification method:	Antigen affinity purification
Storage:	PBS with 0.02% sodium azide and 50% glycerol pH 7.3. Store at -20°C.