

EIF4H Polyclonal Antibody

Catalog number: 11012-1-AP

Size: 37 µg/150 µl

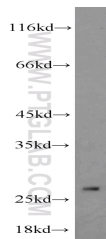
Source: Rabbit

Isotype: IgG

Synonyms:

EIF4H; KIAA0038; WBSR1;

WSCR1



HeLa cells were subjected to SDS PAGE followed by western blot with 11012-1-AP(EIF4H Antibody) at dilution of 1:600

Background

Eukaryotic initiation factor (eIF)4H, which encoded by the gene for HUMORFU_1, functions to stimulate the initiation of protein synthesis at the level of mRNA utilization. And its homolog in human, WBSR1, located on 7q11, is commonly missed in patients suffered the Williams-Beuren syndrome, which is a complex neurodevelopmental disorder characterized by cardiovascular defects, cerebral dysplasias and a peculiar cognitive-behavioral profile. EIF4H has two kind of isoforms. The short isoform(~25kDa) is the predominant isoform and is expressed alone in liver and skeletal muscle. This is a rabbit anti-EIF4H polyclonal antibody raised against part of N-terminal chain of human EIF4H, and can recognize two kinds of isoform.

Applications

Tested applications:	ELISA, WB
Cited applications:	WB
Species specificity:	Human, mouse, rat; other species not tested.
Cited species:	Human
Positive WB detected in:	HeLa cells, PC-3 cells
Calculated EIF4H MW:	27kd
Observed EIF4H MW:	27kd
Recommended dilution:	WB: 1:200-1:2000

Application key: WB = Western blotting, IHC = Immunohistochemistry, IF = Immunofluorescence, IP = Immunoprecipitation, FC = Flow cytometry

Immunogen information

Immunogen:	Ag1468
GenBank accession number:	BC010021
Gene ID (NCBI):	7458
Full name:	Eukaryotic translation initiation factor 4H

Product information

Purification method:	Antigen affinity purification
Storage:	PBS with 0.1% sodium azide and 50% glycerol pH 7.3. Store at -20°C.