

NME6 Polyclonal Antibody

Catalog number: 10250-1-AP

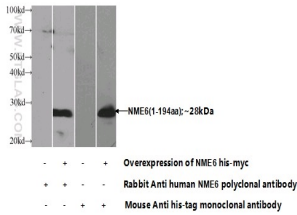
Size: 37 µg/150 µl

Source: Rabbit

Isotype: IgG

Synonyms:

NME6; IPIA ALPHA, NDK 6,
NDP kinase 6, NME6



Transfected HEK-293 cells were subjected to SDS PAGE followed by western blot with 10250-1-AP(NME6 Antibody) at dilution of 1:1000

Applications

Tested applications:	ELISA, WB
Species specificity:	Human,Mouse,Rat; other species not tested.
Calculated NME6 MW:	22 kDa
Observed NME6 MW:	
Positive WB detected in	Transfected HEK-293 cells
Recommended dilution:	WB: 1:500-1:5000

Application key: WB = Western blotting, IHC = Immunohistochemistry, IF = Immunofluorescence, IP = Immunoprecipitation

Immunogen information

Immunogen:	Ag0315
GenBank accession number:	BC001808
Gene ID (NCBI):	10201
Full name:	Non-metastatic cells 6, protein expressed in (nucleoside-diphosphate kinase)

Product information

Purification method:	Antigen affinity purification
Storage:	PBS with 0.1% sodium azide and 50% glycerol pH 7.3. Store at -20°C.