

## MUM1 Polyclonal Antibody

Catalog number: 12682-1-AP

Size: 20 µg/150 µl

Source: Rabbit

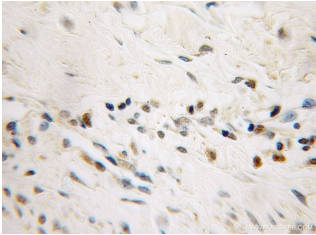
Isotype: IgG

Synonyms:

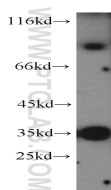
MUM1; EXPAND1, FLJ14868,

FLJ22283, HSPC211, MUM 1,

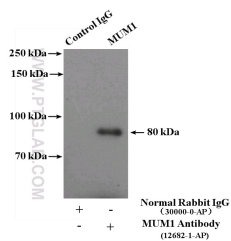
MUM1, Protein expandere



Immunohistochemical of paraffin-embedded human endometrial cancer using 12682-1-AP(MUM1 antibody) at dilution of 1:50 (under 10x lens)



HT-1080 cells were subjected to SDS PAGE followed by western blot with 12682-1-AP(MUM1 antibody) at dilution of 1:300



IP Result of anti-MUM1 (IP:12682-1-AP, 4µg; Detection:12682-1-AP 1:300) with Jurkat cells lysate 4000µg.

### Applications

Tested applications:	ELISA, WB, IHC, IP
Species specificity:	Human; other species not tested.
Calculated MUM1 MW:	18 kDa;79 kDa
Observed MUM1 MW:	70-80 kDa
Positive WB detected in	HT-1080 cells, Jurkat cells
Positive IP detected in	Jurkat cells
Positive IHC detected in	Human endometrial cancer tissue
Recommended dilution:	WB: 1:200-1:2000
	IP: 1:200-1:1000
	IHC: 1:20-1:200

Application key: WB = Western blotting, IHC = Immunohistochemistry, IF = Immunofluorescence, IP = Immunoprecipitation

### Immunogen information

Immunogen:	Ag3371
GenBank accession number:	BC008098
Gene ID (NCBI):	84939
Full name:	Melanoma associated antigen (mutated) 1

### Product information

Purification method:	Antigen affinity purification
Storage:	PBS with 0.02% sodium azide and 50% glycerol pH 7.3. Store at -20°C.