

Cryptochrome 1 Polyclonal Antibody

Catalog number: 13474-1-AP

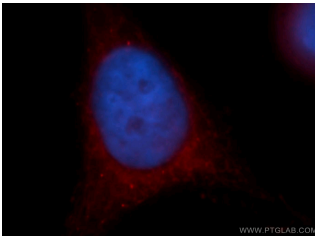
Size: 28 µg/150 µl

Source: Rabbit

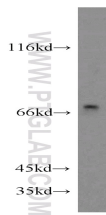
Isotype: IgG

Synonyms:

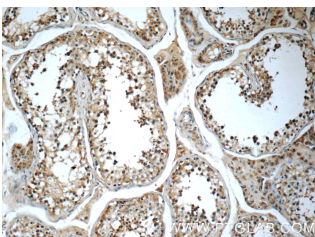
CRY1; CRY1, Cryptochrome 1, PHL1



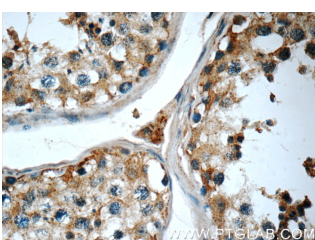
Immunofluorescent analysis of HeLa cells, using CRY1 antibody 13474-1-AP at 1:25 dilution and Rhodamine-labeled goat anti-rabbit IgG (red). Blue pseudocolor = DAPI (fluorescent DNA dye).



Y79 cells were subjected to SDS PAGE followed by western blot with 13474-1-AP (CRY1 antibody) at dilution of 1:1000



Immunohistochemistry of paraffin-embedded human testis tissue slide using 13474-1-AP (CRY1 Antibody) at dilution of 1:50 (under 10x lens)



Immunohistochemistry of paraffin-embedded human

Applications

Tested applications:	ELISA, WB, IF, IHC
Species specificity:	Human, Mouse, Rat; other species not tested.
Calculated Cryptochrome 1 MW:	586aa, 66 kDa
Observed Cryptochrome 1 MW:	70 kDa
Positive WB detected in	Y79 cells, rat testis tissue
Positive IHC detected in	Human testis tissue, human breast cancer tissue
Positive IF detected in	Hela cells, MCF-7 cells
Recommended dilution:	WB: 1:500-1:5000 IHC: 1:20-1:200 IF: 1:10-1:100

Application key: WB = Western blotting, IHC = Immunohistochemistry, IF = Immunofluorescence, IP = Immunoprecipitation

Immunogen information

Immunogen:	Ag4270
GenBank accession number:	BC030519
Gene ID (NCBI):	1407
Full name:	Cryptochrome 1 (photolyase-like)

Product information

Purification method:	Antigen affinity purification
Storage:	PBS with 0.02% sodium azide and 50% glycerol pH 7.3. Store at -20°C.

testis tissue slide using 13474-
1-AP (CRY1 Antibody) at
dilution of 1:50 (under 40x
lens)