

SIRP alpha Polyclonal Antibody

Catalog number: 14482-1-AP

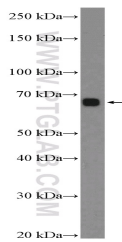
Size: 20 µg/150 µl

Source: Rabbit

Isotype: IgG

Synonyms:

SIRPA; BIT, CD172A, Inhibitory receptor SHPS 1, Macrophage fusion receptor, MFR, MYD 1, MyD 1 antigen, MYD1, P84, PTPNS1, SHP substrate 1, SHPS 1, SHPS1, SIRP, SIRP alpha, SIRP ALPHA 1, Sirp alpha 2, Sirp alpha 3, SIRPA, SIRPalpa, SIRPalpa2



HL-60 cells were subjected to SDS PAGE followed by western blot with 14482-1-AP(SIRPA Antibody) at dilution of 1:600

Applications

Tested applications:	ELISA, WB
Species specificity:	Human, Mouse; other species not tested.
Calculated SIRP alpha MW:	55 kDa
Observed SIRP alpha MW:	65 kDa
Positive WB detected in	HL-60 cells, human heart tissue, mouse cerebellum tissue
Recommended dilution:	WB: 1:200-1:2000

Application key: WB = Western blotting, IHC = Immunohistochemistry, IF = Immunofluorescence, IP = Immunoprecipitation

Immunogen information

Immunogen:	Ag5865
GenBank accession number:	BC033092
Gene ID (NCBI):	140885
Full name:	Signal-regulatory protein alpha

Product information

Purification method:	Antigen affinity purification
Storage:	PBS with 0.02% sodium azide and 50% glycerol pH 7.3. Store at -20°C.