

COX6A1 Polyclonal Antibody

Catalog number: 11460-1-AP

Size: 25 µg/150 µl

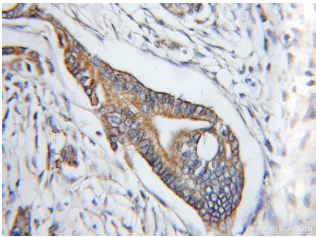
Source: Rabbit

Isotype: IgG

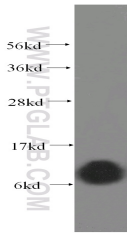
Synonyms:

COX6A1; COX VIa L, COX6A,

COX6A1, COX6AL



Immunohistochemical of paraffin-embedded human pancreas cancer using 11460-1-AP(COX6A1 antibody) at dilution of 1:100 (under 10x lens)



human brain tissue were subjected to SDS PAGE followed by western blot with 11460-1-AP(COX6A1 antibody) at dilution of 1:500

Background

COX6A1(Cytochrome c oxidase subunit 6A1, mitochondrial) is also named as COX6AL and belongs to the cytochrome c oxidase subunit 6A family. This protein is one of the nuclear-coded polypeptide chains of cytochrome c oxidase, the terminal oxidase in mitochondrial electron transport.

Applications

Tested applications:	ELISA, WB, IHC
Cited applications:	WB
Species specificity:	Human, Mouse, Rat; other species not tested.
Cited species:	Human
Calculated COX6A1 MW:	85aa, 9 kDa
Observed COX6A1 MW:	9.5 kDa
Positive WB detected in	Human brain tissue, NIH/3T3 cells
Positive IHC detected in	Human pancreas cancer tissue
Recommended dilution:	WB: 1:200-1:2000 IHC: 1:20-1:200

Application key: WB = Western blotting, IHC = Immunohistochemistry, IF = Immunofluorescence, IP = Immunoprecipitation

Immunogen information

Immunogen:	Ag2006
GenBank accession number:	BC007723
Gene ID (NCBI):	1337
Full name:	Cytochrome c oxidase subunit VIa polypeptide 1

Product information

Purification method:	Antigen affinity purification
Storage:	PBS with 0.1% sodium azide and 50% glycerol pH 7.3. Store at -20°C.