

## ITGB1BP1 Polyclonal Antibody

Catalog number: 12300-1-AP

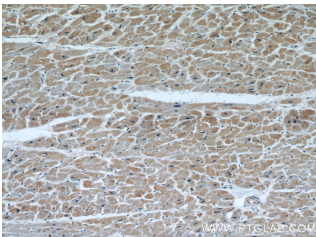
Size: 20 µg/150 µl

Source: Rabbit

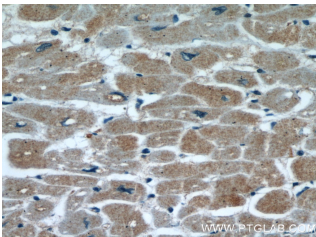
Isotype: IgG

Synonyms:

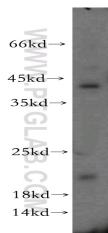
ITGB1BP1; DKFZp686K08158,  
ICAP 1, ICAP 1A, ICAP 1alpha,  
ICAP 1B, ICAP1, ICAP1A,  
ICAP1B, ITGB1BP1



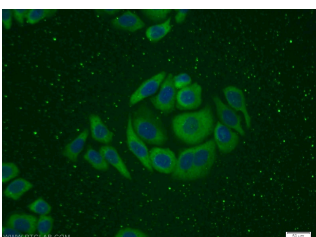
Immunohistochemical of paraffin-embedded human heart using 12300-1-AP (ITGB1BP1 antibody) at dilution of 1:50 (under 10x lens)



Immunohistochemical of paraffin-embedded human heart using 12300-1-AP (ITGB1BP1 antibody) at dilution of 1:50 (under 40x lens)



PC-3 cells were subjected to SDS PAGE followed by western blot with 12300-1-AP (ITGB1BP1 antibody) at dilution of 1:300



Immunofluorescent analysis

### Applications

Tested applications:	ELISA, WB, IHC, IF, IP
Species specificity:	Human, Mouse, Rat; other species not tested.
Calculated ITGB1BP1 MW:	200aa, 22 kDa
Observed ITGB1BP1 MW:	22 kDa
Positive WB detected in	PC-3 cells, human brain tissue, mouse thymus tissue
Positive IP detected in	Mouse thymus tissue
Positive IHC detected in	Human heart tissue, human colon tissue
Positive IF detected in	PC-3 cells
Recommended dilution:	WB: 1:200-1:1000
	IP: 1:200-1:1000
	IHC: 1:20-1:200
	IF: 1:10-1:100

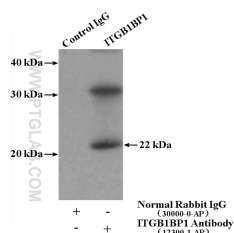
Application key: WB = Western blotting, IHC = Immunohistochemistry, IF = Immunofluorescence, IP = Immunoprecipitation

### Immunogen information

Immunogen:	Ag2945
GenBank accession number:	BC012264
Gene ID (NCBI):	9270
Full name:	Integrin beta 1 binding protein 1

### Product information

Purification method:	Antigen affinity purification
Storage:	PBS with 0.02% sodium azide and 50% glycerol pH 7.3. Store at -20°C.



IP Result of anti-ITGB1BP1

of PC-3 cells using 12300-1-AP( ITGB1BP1 Antibody) at dilution of 1:25 and Alexa Fluor 488-conjugated AffiniPure Goat Anti-Rabbit IgG(H+L) (IP:12300-1-AP, 4ug; Detection:12300-1-AP 1:300) with mouse thymus tissue lysate 2800ug.