

DRAP1/NC2 alpha Polyclonal Antibody

Catalog number: 11020-1-AP

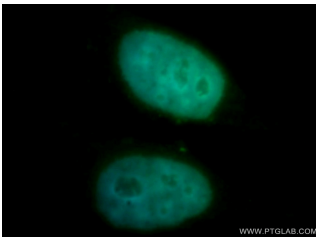
Size: 20 µg/150 µl

Source: Rabbit

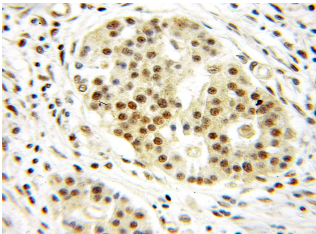
Isotype: IgG

Synonyms:

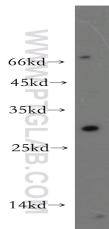
DRAP1; Dr1 associated corepressor, Dr1 associated protein 1, DRAP1, NC2 alpha, Negative co factor 2 alpha



Immunofluorescent analysis of HepG2 cells, using DRAP1 antibody 11020-1-AP at 1:100 dilution and FITC-labeled donkey anti-rabbit IgG (green). Blue pseudocolor = DAPI (fluorescent DNA dye).



Immunohistochemical of paraffin-embedded human pancreas cancer using 11020-1-AP (DRAP1 antibody) at dilution of 1:50 (under 10x lens)



mouse kidney tissue were subjected to SDS PAGE followed by western blot with 11020-1-AP (DRAP1 antibody) at dilution of 1:300

Applications

Tested applications:	ELISA, WB, IHC, IF
Species specificity:	Human, Mouse, Rat; other species not tested.
Calculated DRAP1/NC2 alpha	22 kDa
MW:	
Observed DRAP1/NC2 alpha	26-30kd
MW:	
Positive WB detected in	Mouse kidney tissue, human brain tissue, human heart tissue
Positive IHC detected in	Human pancreas cancer tissue
Positive IF detected in	HepG2 cells
Recommended dilution:	WB: 1:200-1:1000 IHC: 1:20-1:200 IF: 1:20-1:200

Application key: WB = Western blotting, IHC = Immunohistochemistry, IF = Immunofluorescence, IP = Immunoprecipitation

Immunogen information

Immunogen:	Ag1470
GenBank accession number:	BC010025
Gene ID (NCBI):	10589
Full name:	DR1-associated protein 1 (negative cofactor 2 alpha)

Product information

Purification method:	Antigen affinity purification
Storage:	PBS with 0.1% sodium azide and 50% glycerol pH 7.3. Store at -20°C.