

SLC20A2 Polyclonal Antibody

Catalog number: 12820-1-AP

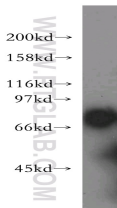
Size: 30 µg/150 µl

Source: Rabbit

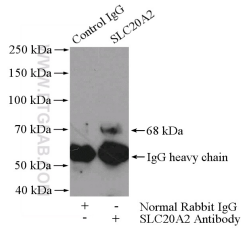
Isotype: IgG

Synonyms:

SLC20A2; Glvr 2, GLVR2, hPit2, MLVAR, Phosphate transporter 2, PIT 2, Pit2, PiT-2, SLC20A2



COLO 320 cells were subjected to SDS PAGE followed by western blot with 12820-1-AP(SLC20A2 antibody) at dilution of 1:400



IP Result of anti-SLC20A2 (IP:12820-1-AP, 4µg; Detection:12820-1-AP 1:400) with COLO 320 cells lysate 2400µg.

Applications

Tested applications:	ELISA, WB, IP
Species specificity:	Human, Mouse, Rat; other species not tested.
Calculated SLC20A2 MW:	652aa, 70 kDa
Observed SLC20A2 MW:	68kd
Positive WB detected in	COLO 320 cells
Positive IP detected in	COLO 320 cells
Recommended dilution:	WB: 1:500-1:5000 IP: 1:200-1:1000

Application key: WB = Western blotting, IHC = Immunohistochemistry, IF = Immunofluorescence, IP = Immunoprecipitation

Immunogen information

Immunogen:	Ag3469
GenBank accession number:	BC028600
Gene ID (NCBI):	6575
Full name:	Solute carrier family 20 (phosphate transporter), member 2

Product information

Purification method:	Antigen affinity purification
Storage:	PBS with 0.1% sodium azide and 50% glycerol pH 7.3. Store at -20°C.