

SNAI1 Polyclonal Antibody

Catalog number: 13099-1-AP

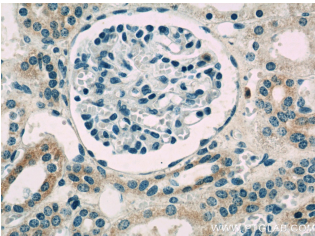
Size: 45 µg/150 µl

Source: Rabbit

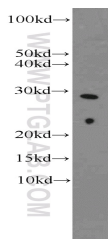
Isotype: IgG

Synonyms:

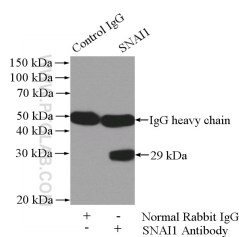
SNAI1; dJ710H13.1, Protein sna, Protein snail homolog 1, SLUGH2, SNA, SNAH, SNAI1, snail homolog 1 (Drosophila), SNAI1, Zinc finger protein SNAI1



Immunohistochemistry of paraffin-embedded human kidney slide using 13099-1-AP (SNAI1 Antibody) at dilution of 1:50



mouse kidney tissue were subjected to SDS PAGE followed by western blot with 13099-1-AP(SNAI1 antibody) at dilution of 1:1000



IP Result of anti-SNAI1 (IP:13099-1-AP, 4µg; Detection:13099-1-AP 1:600) with MCF-7 cells lysate 1040µg.

Background

SNAI1, a member of SNAI1 family of protein, participates in the epithelial to mesenchymal transition(EMT) and formation and maintenance of embryonic mesoderm. The snail family share a common structural, that a highly conserved C-terminal region containing a zinc finger transcription factor. SNAI1 interacts with other corepressor, such as Ajuba, PRMT5 and SIN3a or HDAC1 and 2, to repress the target gene.

Applications

Tested applications:	ELISA, WB, IHC, IP
Cited applications:	IHC, WB
Species specificity:	Human, Mouse, Rat; other species not tested.
Cited species:	Human
Calculated SNAI1 MW:	264aa, 29 kDa
Observed SNAI1 MW:	29 kDa
Positive WB detected in	Mouse kidney tissue, COLO 320 cells, HeLa cells, human heart tissue, mouse heart tissue, NIH/3T3 cells
Positive IP detected in	MCF-7 cells
Positive IHC detected in	Human kidney tissue
Recommended dilution:	WB: 1:500-1:5000 IP: 1:200-1:2000 IHC: 1:20-1:200

Application key: WB = Western blotting, IHC = Immunohistochemistry, IF = Immunofluorescence, IP = Immunoprecipitation

Immunogen information

Immunogen:	Ag3723
GenBank accession number:	BC012910
Gene ID (NCBI):	6615
Full name:	Snail homolog 1 (Drosophila)

Product information

Purification method:	Antigen affinity purification
Storage:	PBS with 0.1% sodium azide and 50% glycerol pH 7.3. Store at -20°C.