

## PRAME Polyclonal Antibody

Catalog number: 11438-1-AP

Size: 21 µg/150 µl

Source: Rabbit

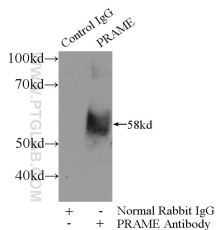
Isotype: IgG

Synonyms:

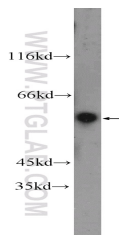
PRAME; MAPE, OIP 4, OIP4,

Opa interacting protein 4,

PRAME



IP Result of anti-PRAME (IP:11438-1-AP, 3µg; Detection:11438-1-AP 1:300) with A549 cells lysate 2400ug.



A549 cells were subjected to SDS PAGE followed by western blot with 11438-1-AP( PRAME Antibody) at dilution of 1:300

### Background

The PRAME (preferentially expressed antigen of melanoma) gene was previously shown to be overexpressed in ovarian/primary peritoneal serous carcinoma compared with malignant mesothelioma using gene expression arrays. It is considered a melanocyte differentiation antigen which is overexpressed in both solid and hematologic tumors. In normal tissue, a very low level of PRAME expression is found in normal testis, adrenals, ovary and endometrium. A high level of PRAME expression has been reported for several solid tumors, including ovarian cancer, breast cancer, lung cancer and melanomas, medulloblastoma, sarcomas, head and neck cancers, neuroblastoma, renal cancer, and Wilms' tumor. As a nuclear transcriptional repressor protein, PRAME binds to retinoic acid receptor  $\alpha$ , thereby inhibiting retinoic acid induced differentiation, growth arrest, and apoptosis.

### Applications

Tested applications:	ELISA, WB, IP
Species specificity:	Human; other species not tested.
Calculated PRAME MW:	509aa, 58 kDa
Observed PRAME MW:	58 kDa
Positive WB detected in	A549 cells, HepG2 cells
Positive IP detected in	A549 cells
Recommended dilution:	WB: 1:200-1:1000 IP: 1:200-1:1000

Application key: WB = Western blotting, IHC = Immunohistochemistry, IF = Immunofluorescence, IP = Immunoprecipitation

### Immunogen information

Immunogen:	Ag1906
GenBank accession number:	BC014074
Gene ID (NCBI):	23532
Full name:	Preferentially expressed antigen in melanoma

### Product information

Purification method:	Antigen affinity purification
Storage:	PBS with 0.1% sodium azide and 50% glycerol pH 7.3. Store at -20°C.