

C1QTNF3 Polyclonal Antibody

Catalog number: 11414-1-AP

Size: 20 µg/150 µl

Source: Rabbit

Isotype: IgG

Synonyms:

C1QTNF3; C1ATNF3, C1QTNF3,

Corcs, Cors, CORS26, CTRP3,

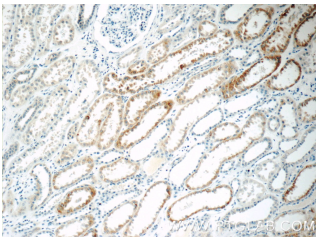
FLJ37576, Secretory protein

CORS26

Applications

Tested applications:	ELISA, IHC
Species specificity:	Human, Mouse, Rat; other species not tested.
Calculated C1QTNF3 MW:	319aa, 35 kDa
Observed C1QTNF3 MW:	
Positive IHC detected in	Human kidney tissue, human small intestine tissue
Recommended dilution:	IHC: 1:20-1:200

Application key: WB = Western blotting, IHC = Immunohistochemistry, IF = Immunofluorescence, IP = Immunoprecipitation



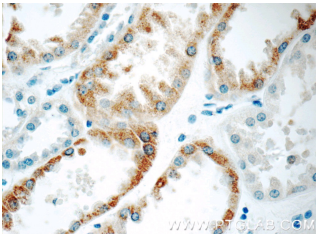
Immunohistochemistry of paraffin-embedded human kidney tissue slide using 11414-1-AP (C1QTNF3 Antibody) at dilution of 1:50 (under 10x lens)

Immunogen information

Immunogen:	Ag1958
GenBank accession number:	BC016021
Gene ID (NCBI):	114899
Full name:	C1q and tumor necrosis factor related protein 3

Product information

Purification method:	Antigen affinity purification
Storage:	PBS with 0.1% sodium azide and 50% glycerol pH 7.3. Store at -20°C.



Immunohistochemistry of paraffin-embedded human kidney tissue slide using 11414-1-AP (C1QTNF3 Antibody) at dilution of 1:50 (under 40x lens)