

KRT36 Polyclonal Antibody

Catalog number: 14309-1-AP

Size: 20 µg/150 µl

Source: Rabbit

Isotype: IgG

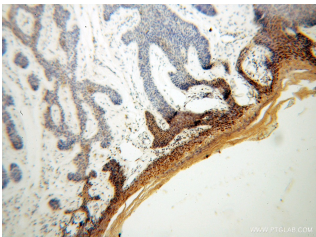
Synonyms:

KRT36; HA6, Hair keratin, type I

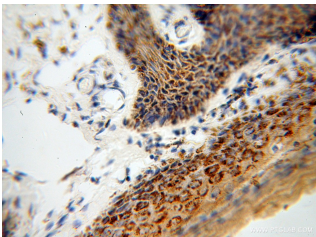
Ha6, hHa6, HKA6, K36, keratin

36, Keratin, type I cuticular Ha6,

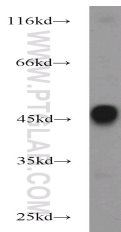
KRT36, KRTHA6



Immunohistochemical of paraffin-embedded human skin cancer using 14309-1-AP(KRT36 antibody) at dilution of 1:100 (under 10x lens)



Immunohistochemical of paraffin-embedded human skin cancer using 14309-1-AP(KRT36 antibody) at dilution of 1:100 (under 40x lens)



mouse skin tissue were subjected to SDS PAGE followed by western blot with 14309-1-AP(KRT36 antibody) at dilution of 1:1000

Applications

Tested applications:	ELISA, WB, IHC
Species specificity:	Human, Mouse, Rat; other species not tested.
Calculated KRT36 MW:	52kd
Observed KRT36 MW:	48kd
Positive WB detected in	Mouse skin tissue
Positive IHC detected in	Human skin cancer tissue
Recommended dilution:	WB: 1:500-1:5000 IHC: 1:20-1:200

Application key: WB = Western blotting, IHC = Immunohistochemistry, IF = Immunofluorescence, IP = Immunoprecipitation

Immunogen information

Immunogen:	Ag5483
GenBank accession number:	BC043581
Gene ID (NCBI):	8689
Full name:	Keratin 36

Product information

Purification method:	Antigen affinity purification
Storage:	PBS with 0.02% sodium azide and 50% glycerol pH 7.3. Store at -20°C.