

PTPN22 Polyclonal Antibody

Catalog number: 11783-1-AP

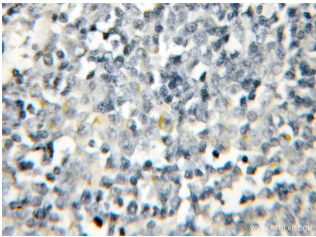
Size: 36 µg/150 µl

Source: Rabbit

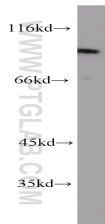
Isotype: IgG

Synonyms:

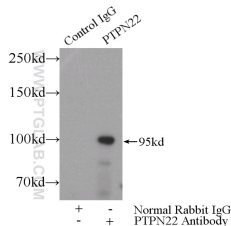
PTPN22; Lymphoid phosphatase, LYP, LYP1, LYP2, PEP, PTPN22, PTPN8



Immunohistochemical of paraffin-embedded human lymphoma using 11783-1-AP (PTPN22 antibody) at dilution of 1:50 (under 10x lens)



Jurkat cells were subjected to SDS PAGE followed by western blot with 11783-1-AP (PTPN22 antibody) at dilution of 1:600



IP Result of anti-PTPN22 (IP:11783-1-AP, 4µg; Detection:11783-1-AP 1:300) with Jurkat cells lysate 3080µg.

Background

PTPN22 (Tyrosine-protein phosphatase non-receptor type 22) is also named as LYP, PEP, PTPN8. It belongs to the protein-tyrosine phosphatase family and non-receptor class 4 subfamily. It acts as a negative regulator of T-cell receptor (TCR) signaling. Defects in PTPN22 are a cause of susceptibility to systemic lupus erythematosus (SLE). It has 5 isoforms produced by alternative splicing.

Applications

Tested applications:	ELISA, WB, IHC, IP
Cited applications:	IF
Species specificity:	Human, Mouse, Rat; other species not tested.
Cited species:	Rat
Calculated PTPN22 MW:	82 kDa; 92 kDa
Observed PTPN22 MW:	79-95 kDa
Positive WB detected in	Jurkat cells
Positive IP detected in	Jurkat cells
Positive IHC detected in	Human lymphoma tissue
Recommended dilution:	WB: 1:200-1:2000 IP: 1:200-1:1000 IHC: 1:20-1:200

Application key: WB = Western blotting, IHC = Immunohistochemistry, IF = Immunofluorescence, IP = Immunoprecipitation

Immunogen information

Immunogen:	Ag2397
GenBank accession number:	BC017785
Gene ID (NCBI):	26191
Full name:	Protein tyrosine phosphatase, non-receptor type 22 (lymphoid)

Product information

Purification method:	Antigen affinity purification
Storage:	PBS with 0.1% sodium azide and 50% glycerol pH 7.3. Store at -20°C.