

## RHOB Polyclonal Antibody

Catalog number: 14326-1-AP

Size: 20 µg/150 µl

Source: Rabbit

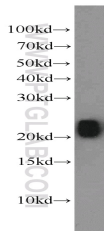
Isotype: IgG

Synonyms:

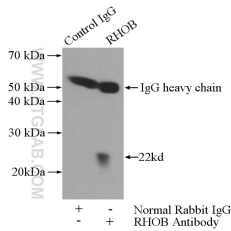
RHOB; ARH6, ARHB, h6,

MST081, MSTP081, Rho cDNA

clone 6, RHOB, RHOH6



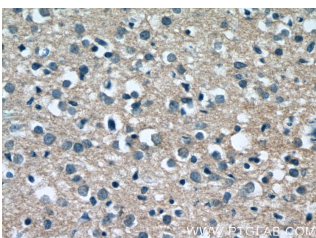
mouse brain tissue were subjected to SDS PAGE followed by western blot with 14326-1-AP(RHOB antibody) at dilution of 1:2000



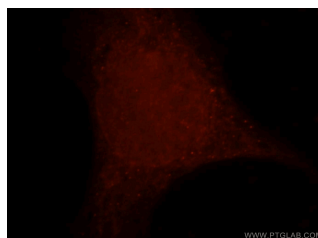
IP Result of anti-RHOB (IP:14326-1-AP, 3µg; Detection:14326-1-AP 1:2000) with HeLa cells lysate 2800µg.



Immunohistochemistry of paraffin-embedded human brain tissue slide using 14326-1-AP( RHOB Antibody) at dilution of 1:50 (under 10x lens)



Immunohistochemistry of paraffin-embedded human brain tissue slide using 14326-



Immunofluorescent analysis of MCF-7 cells, using RHOB antibody 14326-1-AP at 1:25

### Applications

Tested applications:	ELISA, WB, IF, IHC, IP
Cited applications:	WB
Species specificity:	Human, Mouse; other species not tested.
Cited species:	Human
Calculated RHOB MW:	22 kDa
Observed RHOB MW:	22 kDa
Positive WB detected in	Mouse brain tissue, HEK-293 cells, HeLa cells, SH-SY5Y cells
Positive IP detected in	HeLa cells
Positive IHC detected in	Human brain tissue, human gliomas tissue, human liver tissue
Positive IF detected in	MCF-7 cells
Recommended dilution:	WB: 1:500-1:5000 IP: 1:1000-1:10000 IHC: 1:20-1:200 IF: 1:10-1:100

Application key: WB = Western blotting, IHC = Immunohistochemistry, IF = Immunofluorescence, IP = Immunoprecipitation

### Immunogen information

Immunogen:	Ag5593
GenBank accession number:	BC066954
Gene ID (NCBI):	388
Full name:	Ras homolog gene family, member B

### Product information

Purification method:	Antigen affinity purification
Storage:	PBS with 0.02% sodium azide and 50% glycerol pH 7.3. Store at -20°C.

**1-AP( RHOB Antibody) at  
dilution of 1:50 (under 40x  
lens)**

**dilution and Rhodamine-  
labeled goat anti-rabbit IgG  
(red).**