

## HINT1 Polyclonal Antibody

Catalog number: 10717-1-AP

Size: 50 µg/150 µl

Source: Rabbit

Isotype: IgG

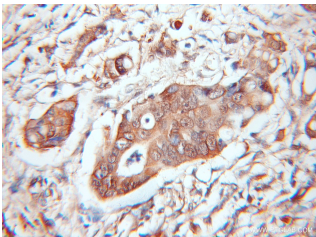
Synonyms:

HINT1; FLJ30414, FLJ32340,

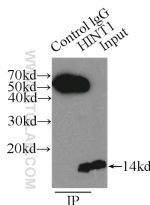
HINT, HINT1, PKCI 1, PKCI1,

PRKCNH1, Protein kinase C

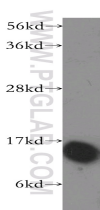
inhibitor 1



Immunohistochemical of paraffin-embedded human colon cancer using 10717-1-AP (HINT1 antibody) at dilution of 1:100 (under 10x lens)



IP Result of anti-HINT1 (IP:10717-1-AP, 3µg; Detection:10717-1-AP 1:500) with mouse brain tissue lysate 7500µg.



HEK-293 cells were subjected to SDS PAGE followed by western blot with 10717-1-AP (HINT1 antibody) at dilution of 1:400

### Background

HINT1 (Histidine triad nucleotide-binding protein 1) is also named as HINT, PKCI1, PRKCNH1, which is a member of the histidine triad (HIT) family, highly conserved in diverse species and ubiquitously expressed in mammalian tissues. It hydrolyzes adenosine 5'-monophosphoramidate substrates such as AMP-morpholidate, AMP-N-alanine methyl ester, AMP-alpha-acetyl lysine methyl ester and AMP-NH2. This antibody is specific to HINT1.

### Applications

Tested applications:	ELISA, WB, IHC, IP
Cited applications:	IHC, WB
Species specificity:	Human, Mouse, Rat; other species not tested.
Cited species:	Human, mouse
Calculated HINT1 MW:	14 kDa
Observed HINT1 MW:	14 kDa
Positive WB detected in	HEK-293 cells, K-562 cells, Raji cells, rat brain tissue, rat thymus tissue
Positive IP detected in	Mouse brain tissue
Positive IHC detected in	Human colon cancer tissue
Recommended dilution:	WB: 1:500-1:5000
	IP: 1:200-1:2000
	IHC: 1:20-1:200

Application key: WB = Western blotting, IHC = Immunohistochemistry, IF = Immunofluorescence, IP = Immunoprecipitation

### Immunogen information

Immunogen:	Ag1142
GenBank accession number:	BC007090
Gene ID (NCBI):	3094
Full name:	Histidine triad nucleotide binding protein 1

### Product information

Purification method:	Antigen affinity purification
Storage:	PBS with 0.1% sodium azide and 50% glycerol pH 7.3. Store at -20°C.