

EIF2S1 Polyclonal Antibody

Catalog number: 11170-1-AP

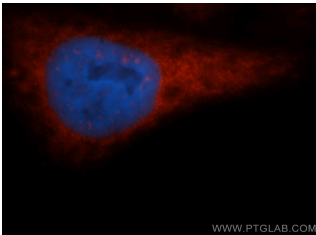
Size: 22 µg/150 µl

Source: Rabbit

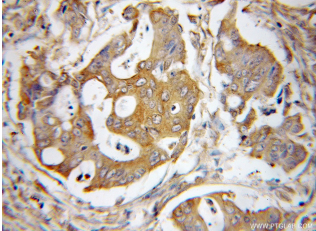
Isotype: IgG

Synonyms:

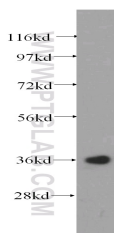
EIF2S1; EIF 2, eIF 2 alpha, EIF 2A, EIF 2alpha, EIF2, EIF2A, EIF2S1



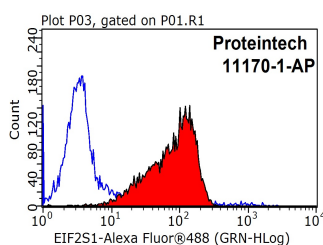
Immunofluorescent analysis of HepG2 cells, using EIF2S1 antibody 11170-1-AP at 1:50 dilution and Rhodamine-labeled goat anti-rabbit IgG (red). Blue pseudocolor = DAPI (fluorescent DNA dye).



Immunohistochemical of paraffin-embedded human colon cancer using 11170-1-AP(EIF2S1 antibody) at dilution of 1:50 (under 10x lens)



human stomach tissue were subjected to SDS PAGE followed by western blot with 11170-1-AP(EIF2S1 antibody) at dilution of 1:500



Background

EIF2S1 is one subunit of the translation initiation factor EIF2, which catalyzes the first regulated step of protein synthesis initiation, promoting the binding of the initiator tRNA to 40S ribosomal subunits. This complex binds to a 40S ribosomal subunit, followed by mRNA binding to form a 43S preinitiation complex. Junction of the 60S ribosomal subunit to form the 80S initiation complex is preceded by hydrolysis of the GTP bound to eIF-2 and release of an eIF-2-GDP binary complex. In order for eIF-2 to recycle and catalyze another round of initiation, the GDP bound to eIF-2 must exchange with GTP by way of a reaction catalyzed by eIF-2B.

Applications

Tested applications:	ELISA, WB, IHC, IF, FC, IP
Cited applications:	WB
Species specificity:	Human, Mouse, Rat; other species not tested.
Cited species:	Rat
Calculated EIF2S1 MW:	36 kDa
Observed EIF2S1 MW:	36kd
Positive WB detected in	Human stomach tissue, human placenta tissue, human skeletal muscle tissue
Positive IP detected in	HepG2 cells
Positive IHC detected in	Human colon cancer tissue
Positive IF detected in	HepG2 cells
Positive FC detected in	HepG2 cells, HeLa cells
Recommended dilution:	WB: 1:200-1:2000 IP: 1:500-1:5000 IHC: 1:20-1:200 IF: 1:20-1:200 FC: N/A

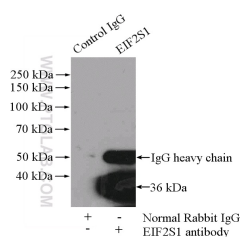
Application key: WB = Western blotting, IHC = Immunohistochemistry, IF = Immunofluorescence, IP = Immunoprecipitation

Immunogen information

Immunogen:	Ag1645
GenBank accession number:	BC002513
Gene ID (NCBI):	1965
Full name:	Eukaryotic translation initiation factor 2, subunit 1 alpha, 35kDa

Product information

Purification method:	Antigen affinity purification
Storage:	PBS with 0.1% sodium azide and 50% glycerol pH 7.3. Store at -20°C.



1X10⁶ HepG2 cells were stained with .2ug EIF2S1 antibody (11170-1-AP, red) and control antibody (blue). Fixed with 90% MeOH blocked with 3% BSA (30 min). Alexa Fluor 488-conjugated AffiniPure Goat Anti-Rabbit IgG(H+L) with dilution 1:1000.

IP Result of anti-EIF2S1 (IP:11170-1-AP, 4ug; Detection:11170-1-AP 1:1000) with HepG2 cells lysate 2400ug.