

MRE11 Polyclonal Antibody

Catalog number: 10744-1-AP

Size: 20 µg/150 µl

Source: Rabbit

Isotype: IgG

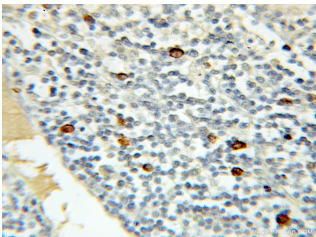
Synonyms:

MRE11A; ATLD, HNGS1,

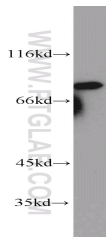
MRE11, MRE11 homolog 1,

MRE11 homolog A, MRE11A,

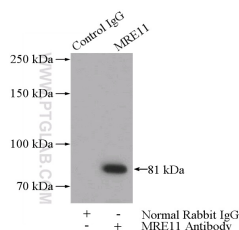
MRE11B



Immunohistochemical of paraffin-embedded human lymphoma using 10744-1-AP(MRE11A antibody) at dilution of 1:50 (under 10x lens)



A431 cells were subjected to SDS PAGE followed by western blot with 10744-1-AP(MRE11A antibody) at dilution of 1:600



IP Result of anti-MRE11A (IP:10744-1-AP, 4ug; Detection:10744-1-AP 1:600) with HeLa cells lysate 1200ug.

Applications

Tested applications:	ELISA, WB, IHC, IP
Species specificity:	Human, Mouse, Rat; other species not tested.
Calculated MRE11 MW:	81 kDa
Observed MRE11 MW:	81 kDa
Positive WB detected in:	A431 cells, HeLa cells, Jurkat cells, K-562 cells
Positive IP detected in:	HeLa cells
Positive IHC detected in:	Human lymphoma tissue
Recommended dilution:	WB: 1:200-1:2000
	IP: 1:200-1:2000
	IHC: 1:20-1:200

Application key: WB = Western blotting, IHC = Immunohistochemistry, IF = Immunofluorescence, IP = Immunoprecipitation

Immunogen information

Immunogen:	Ag1105
GenBank accession number:	BC005241
Gene ID (NCBI):	4361
Full name:	MRE11 meiotic recombination 11 homolog A (S. cerevisiae)

Product information

Purification method:	Antigen affinity purification
Storage:	PBS with 0.1% sodium azide and 50% glycerol pH 7.3. Store at -20°C.