

RSK3 Polyclonal Antibody

Catalog number: 14446-1-AP

Size: 37 µg/150 µl

Source: Rabbit

Isotype: IgG

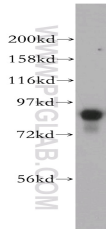
Synonyms:

RPS6KA2; HU 2, MAPKAP kinase 1c, MAPKAPK 1c, MAPKAPK1C, p90 RSK 2, p90 RSK3, p90RSK2, pp90RSK3, Ribosomal S6 kinase 3, RPS6KA2, RSK, RSK 3, RSK3, S6K alpha, S6K alpha 2, S6K alpha2

Applications

Tested applications:	ELISA, WB, IP, IF
Species specificity:	Human, Mouse, Rat; other species not tested.
Calculated RSK3 MW:	83 kDa
Observed RSK3 MW:	83 kDa
Positive WB detected in	NIH/3T3 cells, HeLa cells, MCF7 cells
Positive IP detected in	HeLa cells
Positive IF detected in	HeLa cells
Recommended dilution:	WB: 1:200-1:2000
	IP: 1:200-1:2000
	IF: 1:50-1:500

Application key: WB = Western blotting, IHC = Immunohistochemistry, IF = Immunofluorescence, IP = Immunoprecipitation



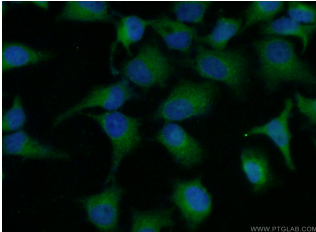
NIH/3T3 cells were subjected to SDS PAGE followed by western blot with 14446-1-AP(RPS6KA2 antibody) at dilution of 1:300

Immunogen information

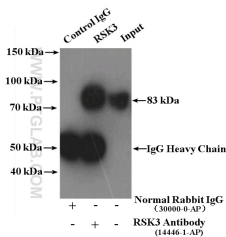
Immunogen:	Ag5862
GenBank accession number:	BC002363
Gene ID (NCBI):	6196
Full name:	Ribosomal protein S6 kinase, 90kDa, polypeptide 2

Product information

Purification method:	Antigen affinity purification
Storage:	PBS with 0.02% sodium azide and 50% glycerol pH 7.3. Store at -20°C.



Immunofluorescent analysis of (10% Formaldehyde) fixed HeLa cells using 14446-1-AP(RPS6KA2 Antibody) at dilution of 1:50 and Alexa Fluor 488-conjugated AffiniPure Goat Anti-Rabbit IgG(H+L)



IP Result of anti-RPS6KA2 (IP:14446-1-AP, 4µg; Detection:14446-1-AP 1:800) with HeLa cells lysate 4000µg.