

ORC2L Polyclonal Antibody

Catalog number: 12739-1-AP

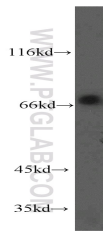
Size: 28 µg/150 µl

Source: Rabbit

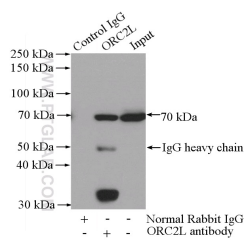
Isotype: IgG

Synonyms:

ORC2L; ORC2, ORC2L



HepG2 cells were subjected to SDS PAGE followed by western blot with 12739-1-AP (ORC2L antibody) at dilution of 1:500



IP Result of anti-ORC2L (IP:12739-1-AP, 4µg; Detection:12739-1-AP 1:300) with HepG2 cells lysate 1200µg.

Applications

Tested applications:	ELISA, WB, IP
Species specificity:	Human, Mouse, Rat; other species not tested.
Calculated ORC2L MW:	577aa, 66 kDa
Observed ORC2L MW:	70-74 kDa
Positive WB detected in:	HepG2 cells
Positive IP detected in:	HepG2 cells
Recommended dilution:	WB: 1:500-1:5000 IP: 1:200-1:1000

Application key: WB = Western blotting, IHC = Immunohistochemistry, IF = Immunofluorescence, IP = Immunoprecipitation

Immunogen information

Immunogen:	Ag3635
GenBank accession number:	BC014834
Gene ID (NCBI):	4999
Full name:	Origin recognition complex, subunit 2-like (yeast)

Product information

Purification method:	Antigen affinity purification
Storage:	PBS with 0.02% sodium azide and 50% glycerol pH 7.3. Store at -20°C.