

Casein Kinase 1 epsilon Polyclonal Antibody

Catalog number: 11230-1-AP

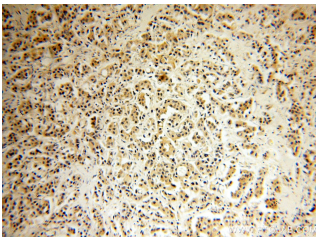
Size: 60 µg/150 µl

Source: Rabbit

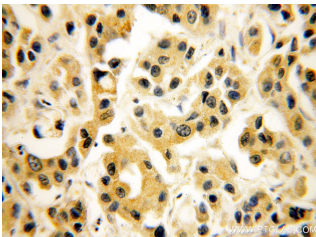
Isotype: IgG

Synonyms:

CSNK1E; Casein Kinase 1
epsilon, casein kinase 1, epsilon,
CKI epsilon, CKIε, CSNK1E,
HCKIE



Immunohistochemical of paraffin-embedded human breast cancer using 11230-1-AP (CSNK1E antibody) at dilution of 1:50 (under 10x lens)



Immunohistochemical of paraffin-embedded human breast cancer using 11230-1-AP (CSNK1E antibody) at dilution of 1:50 (under 40x lens)

Background

CSNK1E (Casein kinase I isoform epsilon) is also named as CKIε, CKI-epsilon and belongs to the casein kinase I subfamily. It plays a significant role in delaying the negative feedback signal within the transcription-translation-based autoregulatory loop that composes the core of the circadian mechanism and makes an ideal target for pharmaceutical compounds influencing circadian rhythms, sleep, and jet lag, as well as other physiologic and metabolic processes under circadian regulation (PMID:10775102). It can be autophosphorylated (PMID:19690332).

Applications

| | |
|--|--|
| Tested applications: | ELISA, IHC |
| Cited applications: | WB |
| Species specificity: | Human, Mouse, Rat; other species not tested. |
| Cited species: | Human |
| Calculated Casein Kinase 1 epsilon MW: | 47 kDa |
| Observed Casein Kinase 1 epsilon MW: | |
| Positive IHC detected in | Human breast cancer tissue, human heart tissue, human kidney tissue, human ovary tissue, human testis tissue |
| Recommended dilution: | IHC: 1:20-1:200 |

Application key: WB = Western blotting, IHC = Immunohistochemistry, IF = Immunofluorescence, IP = Immunoprecipitation

Immunogen information

| | |
|---------------------------|--------------------------|
| Immunogen: | Ag1742 |
| GenBank accession number: | BC006490 |
| Gene ID (NCBI): | 1454 |
| Full name: | Casein kinase 1, epsilon |

Product information

| | |
|----------------------|---|
| Purification method: | Antigen affinity purification |
| Storage: | PBS with 0.1% sodium azide and 50% glycerol pH 7.3. Store at -20°C. |