

## PREPL Polyclonal Antibody

Catalog number: 12478-1-AP

Size: 28 µg/150 µl

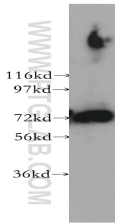
Source: Rabbit

Isotype: IgG

Synonyms:

PREPL; FLJ16627, KIAA0436,

PREPL, prolyl endopeptidase like, Prolylendopeptidase like



human brain tissue were subjected to SDS PAGE followed by western blot with 12478-1-AP (PREPL antibody) at dilution of 1:400

### Background

PREPL (Prolyl endopeptidase-like) is also named as KIAA0436 and belongs to the prolyl oligopeptidase subfamily of serine peptidases. It is probable a serine peptidase whose precise substrate specificity remains unclear. Does not cleave peptides after a arginine or lysine residue. PREPL is a novel oligopeptidase with unique structural and functional characteristics (PMID:16385448). It has 4 isoforms produced by alternative splicing and can exist as a homodimer (PMID:16143824). Defects in PREPL are a cause of hypotonia-cystinuria syndrome (HCS).

### Applications

Tested applications:	ELISA, WB
Species specificity:	Human, Mouse, Rat; other species not tested.
Calculated PREPL MW:	72 kDa
Observed PREPL MW:	72 kDa
Positive WB detected in	Human brain tissue
Recommended dilution:	WB: 1:500-1:5000

Application key: WB = Western blotting, IHC = Immunohistochemistry, IF = Immunofluorescence, IP = Immunoprecipitation

### Immunogen information

Immunogen:	Ag3196
GenBank accession number:	BC013193
Gene ID (NCBI):	9581
Full name:	Prolyl endopeptidase-like

### Product information

Purification method:	Antigen affinity purification
Storage:	PBS with 0.1% sodium azide and 50% glycerol pH 7.3. Store at -20°C.