

PHKB Polyclonal Antibody

Catalog number: 13400-1-AP

Size: 36 µg/150 µl

Source: Rabbit

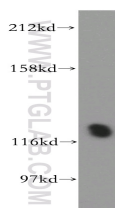
Isotype: IgG

Synonyms:

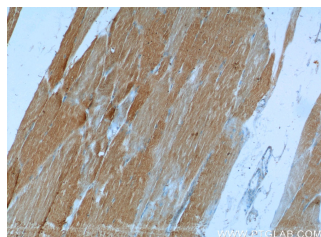
PHKB; DKFZp781E15103,

FLJ41698, PHKB, phosphorylase

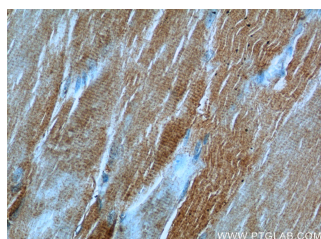
kinase, beta



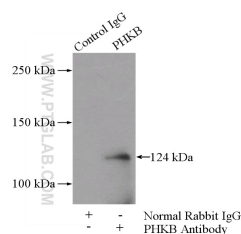
mouse heart tissue were subjected to SDS PAGE followed by western blot with 13400-1-AP(PHKB antibody) at dilution of 1:1000



Immunohistochemistry of paraffin-embedded human skeletal muscle tissue slide using 13400-1-AP(PHKB Antibody) at dilution of 1:50 (under 10x lens)



Immunohistochemistry of paraffin-embedded human skeletal muscle tissue slide using 13400-1-AP(PHKB Antibody) at dilution of 1:50 (under 40x lens)



IP Result of anti-PHKB

Background

PHKB gene encodes phosphorylase kinase subunit beta involved in glycan biosynthesis and glycogen metabolism. PHKB activity is regulated by phosphorylation of various serine residues, and catalyzes the phosphorylation of serine in certain substrates, including troponin I. Phosphorylase kinase (PhK) complex, composed of alpha, beta, gamma, and delta subunits, stimulates energy production from glycogen in the cascade activation of glycogenolysis. Its large homologous alpha and beta subunits regulate the activity of the catalytic gamma subunit. Defects in PHKB are the cause of glycogen storage disease type 9B (GSD9B) also known as phosphorylase kinase deficiency of liver and muscle (PKD), characterized by hepatomegaly, only slightly elevated transaminases and plasma lipids, clinical improvement with increasing age, and remarkably no clinical muscle involvement.

Applications

Tested applications:	ELISA, WB, IHC, IP
Cited applications:	IP, WB
Species specificity:	Human, Mouse; other species not tested.
Cited species:	Mouse
Calculated PHKB MW:	1086aa,124 kDa
Observed PHKB MW:	124 kDa
Positive WB detected in	Mouse heart tissue, mouse skeletal muscle tissue
Positive IP detected in	Mouse heart tissue
Positive IHC detected in	Human skeletal muscle tissue, human liver tissue
Recommended dilution:	WB: 1:200-1:2000
	IP: 1:200-1:2000
	IHC: 1:20-1:200

Application key: WB = Western blotting, IHC = Immunohistochemistry, IF = Immunofluorescence, IP = Immunoprecipitation

Immunogen information

Immunogen:	Ag4240
GenBank accession number:	BC033657
Gene ID (NCBI):	5257
Full name:	Phosphorylase kinase, beta

Product information

Purification method:	Antigen affinity purification
Storage:	PBS with 0.02% sodium azide and 50% glycerol pH 7.3. Store at -20°C.

(IP:13400-1-AP, 4ug;
Detection:13400-1-AP 1:500)
with mouse heart tissue lysate
3200ug.