

PPP3R1 Polyclonal Antibody

Catalog number: 13210-1-AP

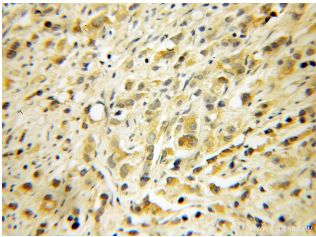
Size: 22 µg/150 µl

Source: Rabbit

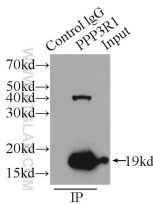
Isotype: IgG

Synonyms:

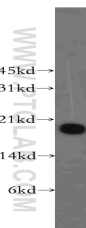
PPP3R1; Calcineurin subunit B type 1, CALNB1, CNA2, CNB, CNB1, PPP3R1



Immunohistochemical of paraffin-embedded human gliomas using 13210-1-AP (PPP3R1 antibody) at dilution of 1:100 (under 10x lens)



IP Result of anti-PPP3R1 (IP:13210-1-AP, 3µg; Detection:13210-1-AP 1:300) with HeLa cells lysate 5000µg.



K-562 cells were subjected to SDS PAGE followed by western blot with 13210-1-AP (PPP3R1 antibody) at dilution of 1:400

Background

Protein phosphatase 3 (PPP3, formerly PP2B, Calcineurin), a serine/ threonine protein phosphatase, is a heterodimer composed of one catalytic subunit (PPP3C, Calcineurin A) and one regulatory subunit (PPP3R, Calcineurin B). PPP3R has two isoforms, PPP3R1 and PPP3R2. PPP3R1 is ubiquitously expressed in different tissues and is coded by the PPP3R1 gene which was mapped recently to human chromosome 2. PPP3R1 has four functional calcium-binding sites.

Applications

Tested applications:	ELISA, IHC, IP, WB
Cited applications:	WB
Species specificity:	Human, Mouse, Rat; other species not tested.
Cited species:	Human
Calculated PPP3R1 MW:	170aa, 19 kDa
Observed PPP3R1 MW:	19 kDa
Positive WB detected in	K-562 cells, HeLa cells, human stomach tissue
Positive IP detected in	HeLa cells
Positive IHC detected in	Human gliomas tissue
Recommended dilution:	WB: 1:200-1:1000 IP: 1:200-1:1000 IHC: 1:20-1:200

Application key: WB = Western blotting, IHC = Immunohistochemistry, IF = Immunofluorescence, IP = Immunoprecipitation

Immunogen information

Immunogen:	Ag3992
GenBank accession number:	BC027913
Gene ID (NCBI):	5534
Full name:	Protein phosphatase 3 (formerly 2B), regulatory subunit B, alpha isoform

Product information

Purification method:	Antigen affinity purification
Storage:	PBS with 0.1% sodium azide and 50% glycerol pH 7.3. Store at -20°C.