

ASGR1 Polyclonal Antibody

Catalog number: 11739-1-AP

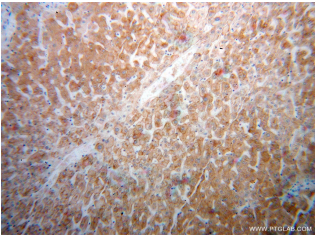
Size: 44 µg/150 µl

Source: Rabbit

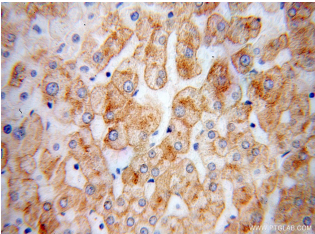
Isotype: IgG

Synonyms:

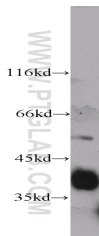
ASGR1; ASGP R 1, ASGPR,
ASGPR 1, ASGR1,
asialoglycoprotein receptor 1,
CLEC4H1, Hepatic lectin H1, HL
1, Hs.12056



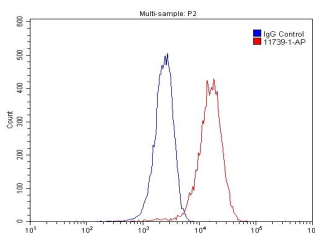
Immunohistochemical of paraffin-embedded human liver cancer using 11739-1-AP(ASGR1 antibody) at dilution of 1:100 (under 10x lens)



Immunohistochemical of paraffin-embedded human liver cancer using 11739-1-AP(ASGR1 antibody) at dilution of 1:100 (under 40x lens)



human liver tissue were subjected to SDS PAGE followed by western blot with 11739-1-AP(ASGR1 antibody) at dilution of 1:500



Background

Asialoglycoprotein receptor (ASGPR), also known as the hepatic galactose/N-acetylglucosamine (GlcNAc) receptor or Ashwell receptor, is a C-type lectin expressed exclusively in hepatic parenchymal cells. ASGPR consists of two subunits, a major subunit (ASGR1, HL-1) and a minor subunit (ASGR2, HL-2), and specifically recognizes terminal β -linked galactose or GlcNAc on circulating glycoproteins or cells. This receptor plays a critical role in serum glycoprotein homeostasis by mediating the endocytosis and lysosomal degradation of glycoproteins that contain terminal galactose or GlcNAc residues. ASGPR may facilitate hepatic infection by multiple viruses including hepatitis B, and is also a target for liver-specific drug delivery.

Applications

Tested applications:	ELISA, WB, IHC, IP, FC
Species specificity:	Human, Mouse, Rat; other species not tested.
Calculated ASGR1 MW:	291aa, 33 kDa
Observed ASGR1 MW:	40 kDa
Positive WB detected in	Human liver tissue, mouse liver tissue
Positive IP detected in	Mouse liver tissue
Positive IHC detected in	Human liver cancer tissue, human liver tissue
Positive FC detected in	HepG2 cells
Recommended dilution:	WB: 1:200-1:2000 IP: 1:200-1:2000 IHC: 1:20-1:200 FC: N/A

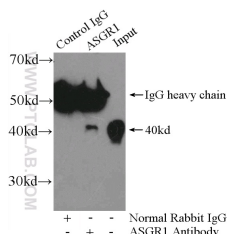
Application key: WB = Western blotting, IHC = Immunohistochemistry, IF = Immunofluorescence, IP = Immunoprecipitation

Immunogen information

Immunogen:	Ag2310
GenBank accession number:	BC032130
Gene ID (NCBI):	432
Full name:	Asialoglycoprotein receptor 1

Product information

Purification method:	Antigen affinity purification
Storage:	PBS with 0.1% sodium azide and 50% glycerol pH 7.3. Store at -20°C.



1X10⁶ HepG2 cells were stained with 0.2ug ASGR1 antibody (11739-1-AP, red) and control antibody (blue). Fixed with 4% PFA blocked with 3% BSA (30 min). Alexa Fluor 488-conjugated AffiniPure Goat Anti-Rabbit IgG(H+L) with dilution 1:1500.

IP Result of anti-ASGR1 (IP:11739-1-AP, 4ug; Detection:11739-1-AP 1:500) with mouse liver tissue lysate 6400ug.