

## IHH Polyclonal Antibody

Catalog number: 13388-1-AP

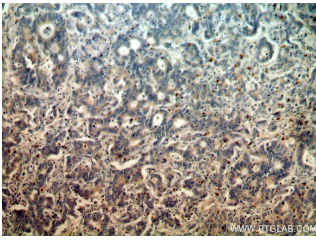
Size: 36 µg/150 µl

Source: Rabbit

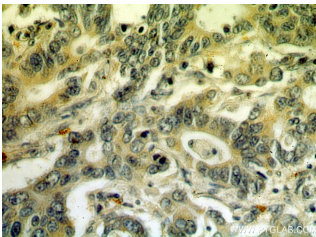
Isotype: IgG

Synonyms:

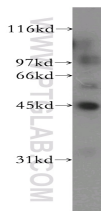
IHH; BDA1, HHG 2, HHG2, IHH,  
Indian hedgehog protein



Immunohistochemical of paraffin-embedded human stomach cancer using 13388-1-AP (IHH antibody) at dilution of 1:50 (under 10x lens)



Immunohistochemical of paraffin-embedded human stomach cancer using 13388-1-AP (IHH antibody) at dilution of 1:50 (under 40x lens)



human kidney tissue were subjected to SDS PAGE followed by western blot with 13388-1-AP (IHH antibody) at dilution of 1:500

### Applications

Tested applications:	ELISA, WB, IHC
Species specificity:	Human, Mouse, Rat; other species not tested.
Calculated IHH MW:	411aa, 45 kDa
Observed IHH MW:	45 kDa
Positive WB detected in	Human kidney tissue, human heart tissue
Positive IHC detected in	Human stomach cancer tissue, human kidney tissue
Recommended dilution:	WB: 1:500-1:5000 IHC: 1:20-1:200

Application key: WB = Western blotting, IHC = Immunohistochemistry, IF = Immunofluorescence, IP = Immunoprecipitation

### Immunogen information

Immunogen:	Ag4046
GenBank accession number:	BC034757
Gene ID (NCBI):	3549
Full name:	Indian hedgehog homolog (Drosophila)

### Product information

Purification method:	Antigen affinity purification
Storage:	PBS with 0.02% sodium azide and 50% glycerol pH 7.3. Store at -20°C.