

Parkin Polyclonal Antibody

Catalog number: 14060-1-AP

Size: 30 µg/150 µl

Source: Rabbit

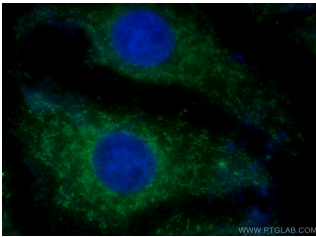
Isotype: IgG

Synonyms:

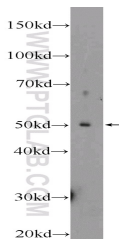
PARK2; AR JP, LPRS2, PARK2,

Parkinson disease protein 2,

PDJ, PRKN



Immunofluorescent analysis of SH-SY5Y cells using 14060-1-AP (Parkin Antibody) at dilution of 1:50 and Alexa Fluor 488-conjugated AffiniPure Goat Anti-Rabbit IgG(H+L)



mouse brain tissue were subjected to SDS PAGE followed by western blot with 14060-1-AP (Parkin Antibody) at dilution of 1:300

Background

Parkin, a RING-type E3 ubiquitin-protein ligase, is involved in the ubiquitination pathway and contributes to protection from neurotoxicity induced by unfolded protein stresses. Its ubiquitin-protein ligase activity promotes the degradation of a variety of proteins including itself. Mutations in Parkin are implicated in the pathogenesis of autosomal recessive familial Parkinson's disease. It has 6 isoforms produced by alternative splicing.

Applications

Tested applications:	ELISA, WB, IF
Species specificity:	Human, Mouse, Rat; other species not tested.
Calculated Parkin MW:	52 kDa
Observed Parkin MW:	52 kDa
Positive WB detected in	Mouse brain tissue, C6 cells, SH-SY5Y cells
Positive IF detected in	SH-SY5Y cells
Recommended dilution:	WB: 1:200-1:1000 IF: 1:20-1:200

Application key: WB = Western blotting, IHC = Immunohistochemistry, IF = Immunofluorescence, IP = Immunoprecipitation

Immunogen information

Immunogen:	Ag5092
GenBank accession number:	BC022014
Gene ID (NCBI):	5071
Full name:	Parkinson disease (autosomal recessive, juvenile) 2, parkin

Product information

Purification method:	Antigen affinity purification
Storage:	PBS with 0.1% sodium azide and 50% glycerol pH 7.3. Store at -20°C.