

SLC20A1 Polyclonal Antibody

Catalog number: 12423-1-AP

Size: 92 µg/150 µl

Source: Rabbit

Isotype: IgG

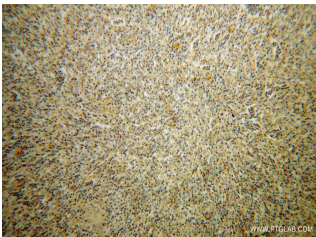
Synonyms:

SLC20A1; DKFZp686J2397,

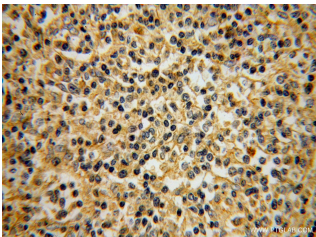
FLJ41426, Glvr 1, GLVR1,

Phosphate transporter 1, PiT 1,

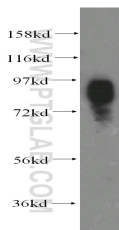
PIT1, SLC20A1



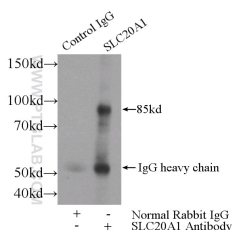
Immunohistochemical of paraffin-embedded human lymphoma using 12423-1-AP(SLC20A1 antibody) at dilution of 1:50 (under 10x lens)



Immunohistochemical of paraffin-embedded human lymphoma using 12423-1-AP(SLC20A1 antibody) at dilution of 1:50 (under 40x lens)



HEK-293 cells were subjected to SDS PAGE followed by western blot with 12423-1-AP(SLC20A1 antibody) at dilution of 1:500



IP Result of anti-SLC20A1

Background

SLC20A1 (also known as PiT1) is a high-affinity sodium-dependent phosphate (Pi) import protein. It is widely expressed and plays a fundamental housekeeping role in phosphate transport, such as absorbing phosphate from interstitial fluid for normal cellular functions. SLC20A1 is involved in cell proliferation, tumor growth and cell signaling independently of its transport function. SLC20A1 also functions as a retroviral receptor, causing human cells to be susceptible to infection by gibbon ape leukemia virus, simian sarcoma-associated virus, feline leukemia virus subgroup B, and 10A1 murine leukemia virus.

Applications

Tested applications:	ELISA, WB, IHC, IP
Species specificity:	Human, Mouse, Rat; other species not tested.
Calculated SLC20A1 MW:	679aa,74 kDa
Observed SLC20A1 MW:	85 kDa
Positive WB detected in	HEK-293 cells, HeLa cells, human kidney tissue, Jurkat cells, K-562 cells
Positive IP detected in	HEK-293 cells
Positive IHC detected in	Human lymphoma tissue
Recommended dilution:	WB: 1:200-1:2000
	IP: 1:200-1:2000
	IHC: 1:20-1:200

Application key: WB = Western blotting, IHC = Immunohistochemistry, IF = Immunofluorescence, IP = Immunoprecipitation

Immunogen information

Immunogen:	Ag3084
GenBank accession number:	BC019944
Gene ID (NCBI):	6574
Full name:	Solute carrier family 20 (phosphate transporter), member 1

Product information

Purification method:	Antigen affinity purification
Storage:	PBS with 0.02% sodium azide and 50% glycerol pH 7.3. Store at -20°C.

**(IP:12423-1-AP, 4ug;
Detection:12423-1-AP 1:500)
with HEK-293 cells lysate
2800ug.**