

IFITM3 Polyclonal Antibody

Catalog number: 11714-1-AP

Size: 59 µg/150 µl

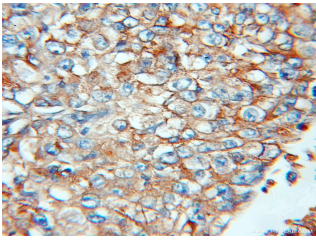
Source: Rabbit

Isotype: IgG

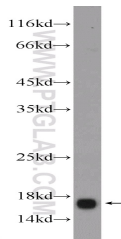
Synonyms:

IFITM3; 1 8U, Fragilis, IFITM3,

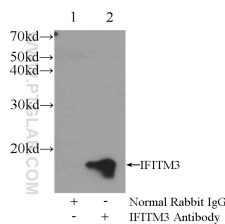
IP15



Immunohistochemical of paraffin-embedded human lung cancer using 11714-1-AP (IFITM3 antibody) at dilution of 1:100 (under 10x lens)



mouse colon tissue were subjected to SDS PAGE followed by western blot with 11714-1-AP (IFITM3 Antibody) at dilution of 1:1000



IP Result of anti-IFITM3 (IP:11714-1-AP, 3µg; Detection:11714-1-AP 1:1500) with HeLa cells lysate 2400µg.

Background

IFITM3, also named as interferon-inducible protein 1-8U, belongs to the CD225 family. It is IFN-induced antiviral protein that mediates cellular innate immunity to at least three major human pathogens, namely influenza A H1N1 virus, West Nile virus (WNV), and dengue virus, by inhibiting the early steps of replication. IFITM3 is identified as interferon-induced cellular proteins that restrict infections by retroviruses and filoviruses and of influenza virus and flaviviruses, respectively. IFITM3, the most potent antiviral IFITM, was found to inhibit an uncharacterized early infectious event after VSV endocytosis, but before primary transcription of its viral genome. IFITM proteins are viral restriction factors that can inhibit infection mediated by the influenza A virus (IAV) hemagglutinin (HA) protein. They differentially restrict the entry of a broad range of enveloped viruses, and modulate cellular tropism independently of viral receptor expression. Catalog#11714-1-AP is a rabbit polyclonal antibody raised against the full-length of human IFITM3.

Applications

Tested applications:	ELISA, IHC, IP, WB
Cited applications:	FC, IF, IHC, IP, WB
Species specificity:	Human, Mouse, Rat; other species not tested.
Cited species:	Human, mouse
Calculated IFITM3 MW:	133aa, 15 kDa
Observed IFITM3 MW:	14 kDa
Positive WB detected in	Mouse colon tissue, HeLa cells
Positive IP detected in	HeLa cells
Positive IHC detected in	Human lung cancer tissue, human colon cancer tissue
Recommended dilution:	WB: 1:500-1:5000
	IP: 1:500-1:5000
	IHC: 1:20-1:200

Application key: WB = Western blotting, IHC = Immunohistochemistry, IF = Immunofluorescence, IP = Immunoprecipitation

Immunogen information

Immunogen:	Ag2285
GenBank accession number:	BC006794
Gene ID (NCBI):	10410
Full name:	Interferon induced transmembrane protein 3 (1-8U)

Product information

Purification method:	Antigen affinity purification
Storage:	PBS with 0.1% sodium azide and 50% glycerol pH 7.3. Store at -20°C.