

PSMG2 Polyclonal Antibody

Catalog number: 10959-1-AP

Size: 20 µg/150 µl

Source: Rabbit

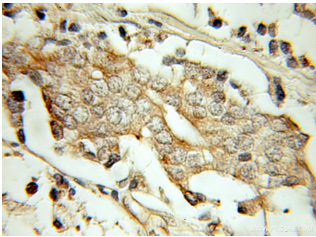
Isotype: IgG

Synonyms:

PSMG2; CLAST3; HCCA3;

HsT1707; MDS003; MGC15092;

PAC2; TNFSF5IP1



Immunohistochemistry of paraffin-embedded human prostate cancer using 10959-1-AP (PSMG2 Antibody) at Dilution 1:50 (under 10x lens)

Applications

Tested applications:	ELISA, IHC
Species specificity:	Human, mouse, rat; other species not tested.
Calculated PSMG2 MW:	29kd
Observed PSMG2 MW:	
Positive IHC detected in:	Human prostate cancer
Recommended dilution:	IHC: 1:20-1:200

Application key: WB = Western blotting, IHC = Immunohistochemistry, IF = Immunofluorescence, IP = Immunoprecipitation, FC = Flow cytometry

Immunogen information

Immunogen:	Ag1400
GenBank accession number:	BC013356
Gene ID (NCBI):	56984
Full name:	Proteasome (prosome, macropain) assembly chaperone 2

Product information

Purification method:	Antigen affinity purification
Storage:	PBS with 0.1% sodium azide and 50% glycerol pH 7.3. Store at -20°C.