

ETFA Polyclonal Antibody

Catalog number: 12262-1-AP

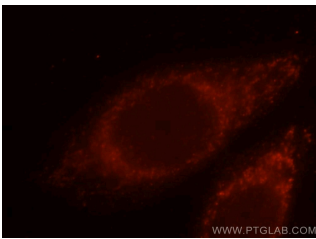
Size: 29 µg/150 µl

Source: Rabbit

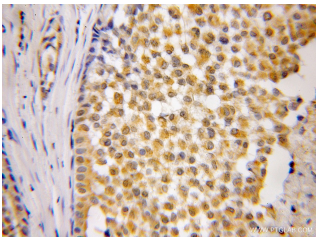
Isotype: IgG

Synonyms:

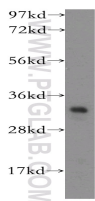
ETFA; Alpha ETF, EMA, ETFA, GA2, MADD



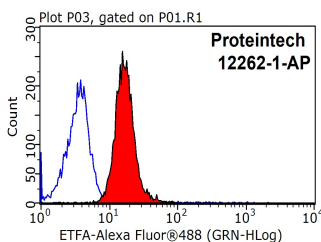
Immunofluorescent analysis of MCF-7 cells, using PNRC2 antibody 12262-1-AP at 1:25 dilution and Rhodamine-labeled goat anti-rabbit IgG (red).



Immunohistochemical of paraffin-embedded human breast cancer using 12262-1-AP (ETFA antibody) at dilution of 1:50 (under 40x lens)



mouse small intestine tissue were subjected to SDS PAGE followed by western blot with 12262-1-AP (ETFA antibody) at dilution of 1:1000



1X10⁶ MCF-7 cells were stained with 0.2µg ETFA antibody (12262-1-AP, red)

Background

Electron transfer flavoprotein (ETF) exists in the mitochondrial matrix as a heterodimer of 30 kD alpha subunits (ETFA) and 28 kD beta subunits (ETFB) and contains 1 flavin adenine dinucleotide (FAD) and 1 adenosine 5-prime monophosphate (AMP) per heterodimer. ETFA serves as a specific electron acceptor for several dehydrogenases, including five acyl-CoA dehydrogenases, glutaryl-CoA and sarcosine dehydrogenase.

Applications

Tested applications:	ELISA, WB, IHC, IF, FC
Cited applications:	WB
Species specificity:	Human, Mouse, Rat; other species not tested.
Cited species:	Human
Calculated ETFA MW:	30 kDa
Observed ETFA MW:	30 kDa
Positive WB detected in	Mouse small intestine tissue, human ileum tissue, Y79 cells
Positive IHC detected in	Human breast cancer tissue
Positive IF detected in	MCF-7 cells
Positive FC detected in	MCF-7 cells
Recommended dilution:	WB: 1:200-1:2000 IHC: 1:20-1:200 IF: 1:10-1:100 FC: N/A

Application key: WB = Western blotting, IHC = Immunohistochemistry, IF = Immunofluorescence, IP = Immunoprecipitation

Immunogen information

Immunogen:	Ag2931
GenBank accession number:	BC015526
Gene ID (NCBI):	2108
Full name:	Electron-transfer-flavoprotein, alpha polypeptide

Product information

Purification method:	Antigen affinity purification
Storage:	PBS with 0.1% sodium azide and 50% glycerol pH 7.3. Store at -20°C.

and control antibody (blue).
Fixed with 90% MeOH
blocked with 3% BSA (30
min). Alexa Fluor 488-
conjugated AffiniPure Goat
Anti-Rabbit IgG(H+L) with
dilution 1:1500.