

## CRCP Polyclonal Antibody

Catalog number: 14348-1-AP

Size: 40 µg/150 µl

Source: Rabbit

Isotype: IgG

Synonyms:

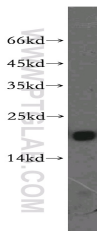
CRCP; CGRP RCP, CGRP

receptor component,

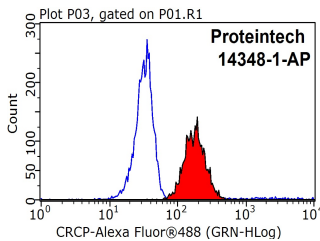
CGRP RCP, CRCP, HsC17, RCP,

RCP9, RNA polymerase III

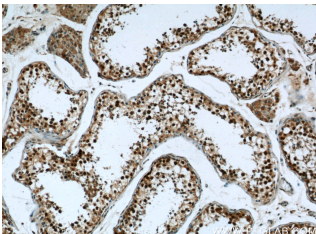
subunit C9



Raji cells were subjected to SDS PAGE followed by western blot with 14348-1-AP (CRCP antibody) at dilution of 1:1000



1X10<sup>6</sup> Raji cells were stained with 0.2ug CRCP antibody (14348-1-AP, red) and control antibody (blue). Fixed with 90% MeOH blocked with 3% BSA (30 min). Alexa Fluor 488-conjugated AffiniPure Goat Anti-Rabbit IgG(H+L) with dilution 1:1000.



Immunohistochemistry of paraffin-embedded human testis tissue slide using 14348-1-AP (CRCP Antibody) at dilution of 1:50 (under 10x lens)

### Applications

Tested applications:	ELISA, WB, IHC, FC, IP
Species specificity:	Human, Mouse, Rat; other species not tested.
Calculated CRCP MW:	17 kDa
Observed CRCP MW:	20 kDa
Positive WB detected in	Raji cells, HeLa cells, human testis tissue, MCF7 cells
Positive IP detected in	Raji cells
Positive IHC detected in	Human testis tissue
Positive FC detected in	Raji cells
Recommended dilution:	WB: 1:1000-1:10000
	IP: 1:500-1:5000
	IHC: 1:20-1:200
	FC: N/A

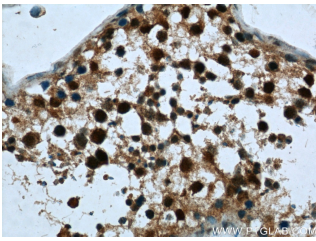
Application key: WB = Western blotting, IHC = Immunohistochemistry, IF = Immunofluorescence, IP = Immunoprecipitation

### Immunogen information

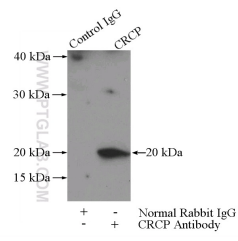
Immunogen:	Ag5689
GenBank accession number:	BC040107
Gene ID (NCBI):	27297
Full name:	CGRP receptor component

### Product information

Purification method:	Antigen affinity purification
Storage:	PBS with 0.02% sodium azide and 50% glycerol pH 7.3. Store at -20°C.



**Immunohistochemistry of paraffin-embedded human testis tissue slide using 14348-1-AP (CRCP Antibody) at dilution of 1:50 (under 40x lens)**



**IP Result of anti-CRCP (IP:14348-1-AP, 3ug; Detection:14348-1-AP 1:1000) with Raji cells lysate 2800ug.**