

GYS1 Polyclonal Antibody

Catalog number: 10566-1-AP

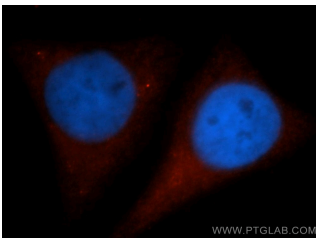
Size: 54 µg/150 µl

Source: Rabbit

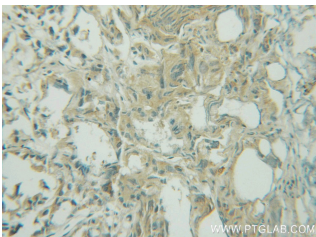
Isotype: IgG

Synonyms:

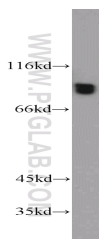
GYS1; glycogen synthase 1
(muscle), GSY, GYS, GYS1



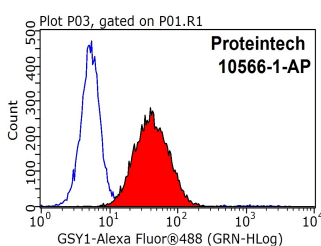
Immunofluorescent analysis of HepG2 cells, using GYS1 antibody 10566-1-AP at 1:50 dilution and Rhodamine-labeled goat anti-rabbit IgG (red). Blue pseudocolor = DAPI (fluorescent DNA dye).



Immunohistochemical of paraffin-embedded human prostate cancer using 10566-1-AP (GYS1 antibody) at dilution of 1:50 (under 25x lens)



K-562 cells were subjected to SDS PAGE followed by western blot with 10566-1-AP (GYS1 antibody) at dilution of 1:500



1X10⁶ HepG2 cells were stained with 0.2ug GYS1

Background

GYS1(Glycogen [starch] synthase, muscle) is the the rate limiting enzyme of the insulin-induced glycogenesis, transferring glucose units from UDP-Glc to a glycogen primer. It catalyzes the linear addition of glucose residues to the branching structure of glycogen, providing a convenient store of glucose for times of metabolic need. This protein has 2 isoforms produced by alternative splicing.

Applications

Tested applications:	ELISA, WB, IHC, IF, FC, IP
Cited applications:	IF, WB
Species specificity:	Human, Mouse, Rat; other species not tested.
Cited species:	Mouse
Calculated GYS1 MW:	84 kDa
Observed GYS1 MW:	84 kDa
Positive WB detected in	K-562 cells, HeLa cells
Positive IP detected in	Mouse skeletal muscle tissue
Positive IHC detected in	Human prostate cancer tissue, human skeletal muscle tissue
Positive IF detected in	HepG2 cells
Positive FC detected in	HepG2 cells
Recommended dilution:	WB: 1:200-1:2000 IP: 1:200-1:1000 IHC: 1:20-1:200 IF: 1:20-1:200 FC: N/A

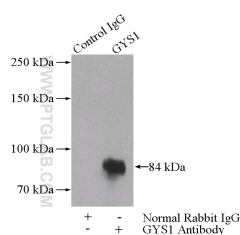
Application key: WB = Western blotting, IHC = Immunohistochemistry, IF = Immunofluorescence, IP = Immunoprecipitation

Immunogen information

Immunogen:	Ag0857
GenBank accession number:	BC007688
Gene ID (NCBI):	2997
Full name:	Glycogen synthase 1 (muscle)

Product information

Purification method:	Antigen affinity purification
Storage:	PBS with 0.1% sodium azide and 50% glycerol pH 7.3. Store at -20°C.



IP Result of anti-GYS1
(IP:10566-1-AP, 4ug;

antibody (10566-1-AP, red)
and control antibody (blue).
Fixed with 90% MeOH
blocked with 3% BSA (30
min). Alexa Fluor 488-
conjugated AffiniPure Goat
Anti-Rabbit IgG(H+L) with
dilution 1:1000.

Detection:10566-1-AP 1:300)
with mouse skeletal muscle
tissue lysate 2200ug.