

CYP51A1 Polyclonal Antibody

Catalog number: 13431-1-AP

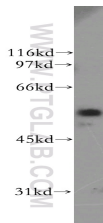
Size: 20 µg/150 µl

Source: Rabbit

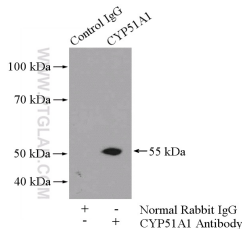
Isotype: IgG

Synonyms:

CYP51A1; CP51, CYP51,
CYP51A1, CYPL1, CYPLI,
Cytochrome P450 14DM,
Cytochrome P450 51A1,
Cytochrome P45014DM,
Cytochrome P450LI, LDM, P450
14DM, P450L1, Sterol 14 alpha
demethylase



PC-3 cells were subjected to SDS PAGE followed by western blot with 13431-1-AP(CYP51A1 antibody) at dilution of 1:1000



IP Result of anti-CYP51A1 (IP:13431-1-AP, 4ug; Detection:13431-1-AP 1:1000) with mouse testis tissue lysate 2800ug.

Applications

Tested applications:	ELISA, WB, IP
Cited applications:	WB
Species specificity:	Human, Mouse, Rat; other species not tested.
Cited species:	Human, mouse, rat
Calculated CYP51A1 MW:	509aa, 57 kDa
Observed CYP51A1 MW:	57kd
Positive WB detected in	PC-3 cells, HL-60 cells, mouse kidney tissue, mouse lung tissue, mouse ovary tissue, mouse testis tissue
Positive IP detected in	Mouse testis tissue
Recommended dilution:	WB: 1:500-1:5000 IP: 1:500-1:5000

Application key: WB = Western blotting, IHC = Immunohistochemistry, IF = Immunofluorescence, IP = Immunoprecipitation

Immunogen information

Immunogen:	Ag4235
GenBank accession number:	BC032322
Gene ID (NCBI):	1595
Full name:	Cytochrome P450, family 51, subfamily A, polypeptide 1

Product information

Purification method:	Antigen affinity purification
Storage:	PBS with 0.02% sodium azide and 50% glycerol pH 7.3. Store at -20°C.