

XPO6 Polyclonal Antibody

Catalog number: 11408-1-AP

Size: 67 µg/150 µl

Source: Rabbit

Isotype: IgG

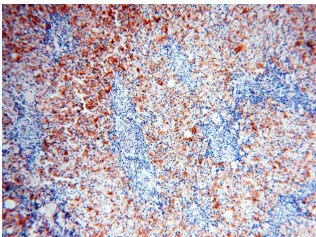
Synonyms:

XPO6; EXP6, exportin 6,

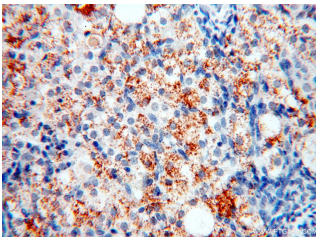
FLJ22519, KIAA0370, Ran

binding protein 20, RANBP20,

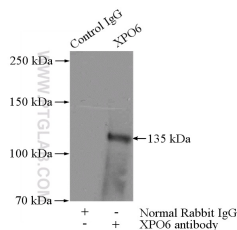
XPO6



Immunohistochemical of paraffin-embedded human ovary using 11408-1-AP(XPO6 antibody) at dilution of 1:25 (under 10x lens)



Immunohistochemical of paraffin-embedded human ovary using 11408-1-AP(XPO6 antibody) at dilution of 1:25 (under 40x lens)



IP Result of anti-XPO6 (IP:11408-1-AP, 4µg; Detection:11408-1-AP 1:300) with HeLa cells lysate 2000ug.

Background

Human XPO6 gene encodes a Ran-binding protein 20, exportin-6, belonging to the exportin family. Exportin-6 shuttles between the nucleus and the cytoplasm and mediates the nuclear export of actin and profilin-actin complexes in somatic cells. Interaction of exportin-6 and actin is achieved in a RanGTP-dependent manner, actin is a major cytoskeletal element which is normally kept cytoplasmic by exportin-6 driven nuclear export.

Applications

Tested applications:	ELISA, IHC, IP
Cited applications:	IF, WB
Species specificity:	Human, Mouse, Rat; other species not tested.
Cited species:	Drosophila, human
Calculated XPO6 MW:	1125aa, 129 kDa
Observed XPO6 MW:	135 kDa
Positive IP detected in	HeLa cells
Positive IHC detected in	Human ovary tissue, human heart tissue, human kidney tissue, human lung tissue, human placenta tissue, human skin tissue, human testis tissue
Recommended dilution:	IP: 1:200-1:1000 IHC: 1:10-1:100

Application key: WB = Western blotting, IHC = Immunohistochemistry, IF = Immunofluorescence, IP = Immunoprecipitation

Immunogen information

Immunogen:	Ag1898
GenBank accession number:	BC014071
Gene ID (NCBI):	23214
Full name:	Exportin 6

Product information

Purification method:	Antigen affinity purification
Storage:	PBS with 0.1% sodium azide and 50% glycerol pH 7.3. Store at -20°C.