

PRTFDC1 Polyclonal Antibody

Catalog number: 11986-1-AP

Size: 23 µg/150 µl

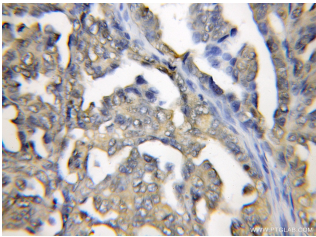
Source: Rabbit

Isotype: IgG

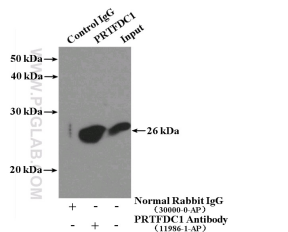
Synonyms:

PRTFDC1; FLJ11888, HHGP,

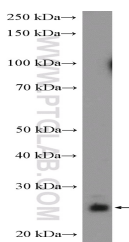
PRTFDC1



Immunohistochemical of paraffin-embedded human ovary tumor using 11986-1-AP(PRTFDC1 antibody) at dilution of 1:50 (under 10x lens)



IP Result of anti-PRTFDC1 (IP:11986-1-AP, 4µg; Detection:11986-1-AP 1:600) with mouse brain tissue lysate 4000µg.



fetal human brain tissue were subjected to SDS PAGE followed by western blot with 11986-1-AP(PRTFDC1 Antibody) at dilution of 1:600

Applications

Tested applications:	ELISA, IHC, WB, IP
Cited applications:	WB
Species specificity:	Human; other species not tested.
Cited species:	Mouse
Calculated PRTFDC1 MW:	225aa,26 kDa
Observed PRTFDC1 MW:	26 kDa
Positive WB detected in	Fetal human brain tissue, human brain tissue, Y79 cells
Positive IP detected in	Mouse brain tissue
Positive IHC detected in	Human ovary tumor tissue
Recommended dilution:	WB: 1:200-1:2000
	IP: 1:200-1:2000
	IHC: 1:20-1:200

Application key: WB = Western blotting, IHC = Immunohistochemistry, IF = Immunofluorescence, IP = Immunoprecipitation

Immunogen information

Immunogen:	Ag2614
GenBank accession number:	BC008662
Gene ID (NCBI):	56952
Full name:	Phosphoribosyl transferase domain containing 1

Product information

Purification method:	Antigen affinity purification
Storage:	PBS with 0.1% sodium azide and 50% glycerol pH 7.3. Store at -20°C.