

GFM1 Polyclonal Antibody

Catalog number: 14274-1-AP

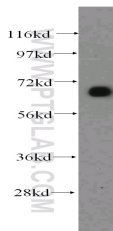
Size: 39 µg/150 µl

Source: Rabbit

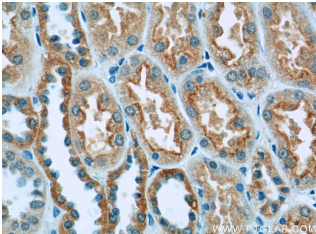
Isotype: IgG

Synonyms:

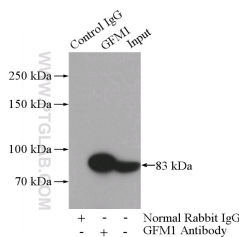
GFM1; COXPD1, EF Gmt, EFG, EFG1, EFGM, EGF1, Elongation factor G1, FLJ12662, FLJ13632, FLJ20773, GFM, GFM1, hEFG1, mEF G 1



mouse kidney tissue were subjected to SDS PAGE followed by western blot with 14274-1-AP(GFM1 antibody) at dilution of 1:500



Immunohistochemistry of paraffin-embedded human kidney tissue slide using 14274-1-AP(GFM1 Antibody) at dilution of 1:50 (under 40x lens)



IP Result of anti-GFM1 (IP:14274-1-AP, 4ug; Detection:14274-1-AP 1:1000) with HeLa cells lysate 1200ug.

Background

Different factors catalyze the three stages of protein translation: initiation, elongation, and termination. There are two translational systems in eukaryotes, one in the cytoplasm and the other in the mitochondria. In mitochondria, the elongation phase requires three elongation factors (EF): Tu (TUFM), Ts (TSFM), and G (GFM1)[PMID:19716793]. GFM1 catalyzes translocation during peptide elongation and mediates ribosomal disassembly during ribosome recycling in concert with the ribosomal recycling factor (RRF). [PMID:16487710]

Applications

Tested applications:	ELISA, WB, IHC, IP
Cited applications:	WB
Species specificity:	Human, Mouse, Rat; other species not tested.
Cited species:	Human
Calculated GFM1 MW:	86 kDa
Observed GFM1 MW:	70 kDa
Positive WB detected in	Mouse kidney tissue, HeLa cells, human heart tissue
Positive IP detected in	HeLa cells
Positive IHC detected in	Human kidney tissue
Recommended dilution:	WB: 1:500-1:5000
	IP: 1:500-1:5000
	IHC: 1:20-1:200

Application key: WB = Western blotting, IHC = Immunohistochemistry, IF = Immunofluorescence, IP = Immunoprecipitation

Immunogen information

Immunogen:	Ag5616
GenBank accession number:	BC049210
Gene ID (NCBI):	85476
Full name:	G elongation factor, mitochondrial 1

Product information

Purification method:	Antigen affinity purification
Storage:	PBS with 0.02% sodium azide and 50% glycerol pH 7.3. Store at -20°C.