

DPP8 Polyclonal Antibody

Catalog number: 12752-1-AP

Size: 20 µg/150 µl

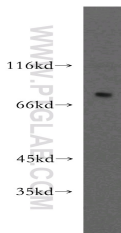
Source: Rabbit

Isotype: IgG

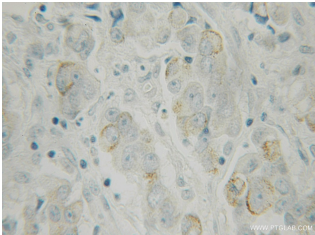
Synonyms:

DPP8; DP8; DPRP1; FLJ14920;

FLJ20283; MGC26191; MSTP141



PC-3 cells were subjected to SDS PAGE followed by western blot with 12752-1-AP (DPP8 Antibody) at dilution of 1:500



Immunohistochemistry of paraffin-embedded human prostate cancer using 12752-1-AP (DPP8 Antibody) at Dilution 1:100 (under 10x lens)

Applications

Tested applications:	ELISA, WB, IHC
Species specificity:	Human, mouse, rat; other species not tested.
Positive WB detected in:	PC-3 cells, human placenta tissue, mouse testis tissue
Calculated DPP8 MW:	847aa,97kd
Observed DPP8 MW:	75-83kd
Positive IHC detected in:	Human prostate cancer
Recommended dilution:	WB: 1:200-1:2000 IHC: 1:50-1:200

Application key: WB = Western blotting, IHC = Immunohistochemistry, IF = Immunofluorescence, IP = Immunoprecipitation, FC = Flow cytometry

Immunogen information

Immunogen:	Ag3262
GenBank accession number:	BC030688
Gene ID (NCBI):	54878
Full name:	Dipeptidyl-peptidase 8

Product information

Purification method:	Antigen affinity purification
Storage:	PBS with 0.02% sodium azide and 50% glycerol pH 7.3. Store at -20°C.