

ASPH Polyclonal Antibody

Catalog number: 14116-1-AP

Size: 24 µg/150 µl

Source: Rabbit

Isotype: IgG

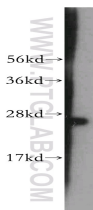
Synonyms:

ASPH; ASP beta hydroxylase,

aspartate beta hydroxylase,

ASPH, BAH, CASQ2BP1,

HAAH, JCTN, junctin



human brain tissue were subjected to SDS PAGE followed by western blot with 14116-1-AP(ASPH antibody) at dilution of 1:500

Applications

Tested applications:	ELISA, WB
Species specificity:	Human; other species not tested.
Calculated ASPH MW:	86kd
Observed ASPH MW:	26kd
Positive WB detected in	Human brain tissue
Recommended dilution:	WB: 1:250 - 1:1000

Application key: WB = Western blotting, IHC = Immunohistochemistry, IF = Immunofluorescence, IP = Immunoprecipitation

Immunogen information

Immunogen:	Ag5265
GenBank accession number:	BC066929
Gene ID (NCBI):	444
Full name:	Aspartate beta-hydroxylase

Product information

Purification method:	Antigen affinity purification
Storage:	PBS with 0.02% sodium azide and 50% glycerol pH 7.3. Store at -20°C.