

## S100A10 Polyclonal Antibody

Catalog number: 11250-1-AP

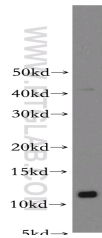
Size: 44 µg/150 µl

Source: Rabbit

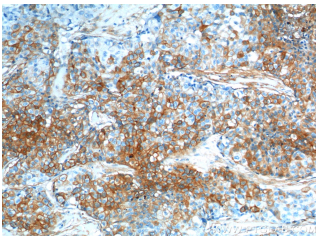
Isotype: IgG

Synonyms:

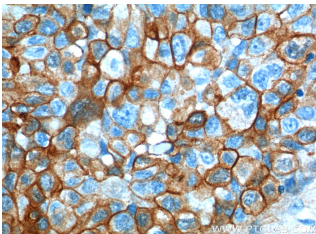
S100A10; 42C, ANX2L,  
ANX2LG, Ca[1], CAL1L,  
Calpactin 1 light chain,  
Calpactin I light chain, Cellular  
ligand of annexin II, CLP11,  
GP11, p10, p10 protein, P11,  
Protein S100 A10, S100A10



mouse lung tissue were subjected to SDS PAGE followed by western blot with 11250-1-AP(S100A10 antibody) at dilution of 1:1000



Immunohistochemistry of paraffin-embedded human lung cancer tissue slide using 11250-1-AP( S100A10 Antibody) at dilution of 1:400 (under 10x lens).



Immunohistochemistry of paraffin-embedded human lung cancer tissue slide using 11250-1-AP( S100A10 Antibody) at dilution of 1:400 (under 40x lens).

### Background

S100A10, also known as p11, is a member of the S100 family of small, EF hand containing dimeric proteins. S100 proteins are localized in the cytoplasm and/or nucleus of a wide range of cells, and involved in the regulation of a number of cellular processes such as cell cycle progression and differentiation. S100A10 is present on the surface of endothelial and other cells in a heterotetrameric complex with another Ca(2+)-binding protein, annexin II. S100A10 may function in exocytosis and endocytosis.

### Applications

Tested applications:	ELISA, WB, FC, IF, IHC
Cited applications:	IP, WB
Species specificity:	Human, Mouse, Rat; other species not tested.
Cited species:	Human
Calculated S100A10 MW:	11 kDa
Observed S100A10 MW:	11 kDa
Positive WB detected in	Mouse lung tissue, human lung tissue, mouse small intestine tissue, rat skin tissue
Positive IHC detected in	Human lung cancer tissue, human gliomas tissue, human pancreas cancer tissue, human skin tissue
Positive IF detected in	HeLa cells
Positive FC detected in	HeLa cells
Recommended dilution:	WB: 1:500-1:5000 IHC: 1:100-1:1000 IF: 1:20-1:200 FC: N/A

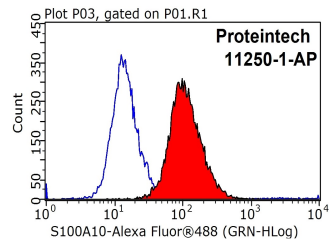
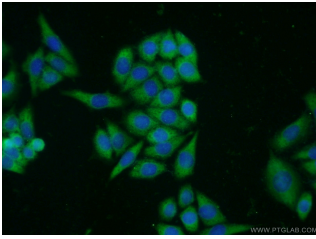
Application key: WB = Western blotting, IHC = Immunohistochemistry, IF = Immunofluorescence, IP = Immunoprecipitation

### Immunogen information

Immunogen:	Ag1779
GenBank accession number:	BC015973
Gene ID (NCBI):	6281
Full name:	S100 calcium binding protein A10

### Product information

Purification method:	Antigen affinity purification
Storage:	PBS with 0.1% sodium azide and 50% glycerol pH 7.3. Store at -20°C.



**Immunofluorescent analysis of HeLa cells using 11250-1-AP ( S100A10 Antibody) at dilution of 1:50 and Alexa Fluor 488-conjugated AffiniPure Goat Anti-Rabbit IgG(H+L)**

**1X10<sup>6</sup> HeLa cells were stained with 0.2ug S100A10 antibody (11250-1-AP, red) and control antibody (blue). Fixed with 90% MeOH blocked with 3% BSA (30 min). Alexa Fluor 488-conjugated AffiniPure Goat Anti-Rabbit IgG(H+L) with dilution 1:1000.**