

## TPM2 Polyclonal Antibody

Catalog number: 11038-1-AP

Size: 30 µg/150 µl

Source: Rabbit

Isotype: IgG

Synonyms:

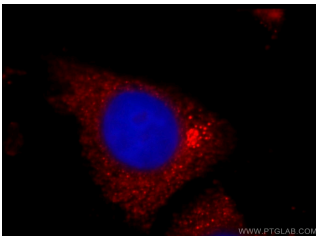
TPM2; AMCD1, Beta

tropomyosin, DA1, DA2B,

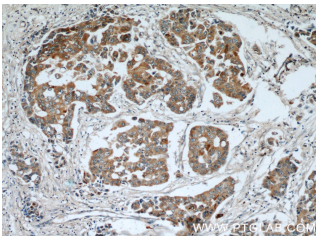
TMSB, TPM2, Tropomyosin 2,

tropomyosin 2 (beta),

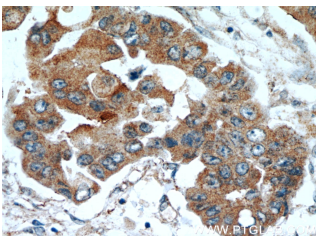
Tropomyosin beta chain



Immunofluorescent analysis of HepG2 cells, using TPM2 antibody 11038-1-AP at 1:25 dilution and Rhodamine-labeled goat anti-rabbit IgG (red). Blue pseudocolor = DAPI (fluorescent DNA dye).



Immunohistochemical of paraffin-embedded human breast cancer using 11038-1-AP (TPM2 antibody) at dilution of 1:50 (under 10x lens)



Immunohistochemical of paraffin-embedded human breast cancer using 11038-1-AP (TPM2 antibody) at dilution of 1:50 (under 40x lens)

### Background

TPM2, also named as TMSB, belongs to the tropomyosin family. It binds to actin filaments in muscle and non-muscle cells. TPM2 plays a central role, in association with the troponin complex, in the calcium dependent regulation of vertebrate striated muscle contraction. In non-muscle cells, TPM2 is implicated in stabilizing cytoskeleton actin filaments. Defects in TPM2 are the cause of nemaline myopathy type 4 (NEM4) and distal arthrogyrosis type 1 (DA1).

### Applications

Tested applications:	ELISA, WB, IHC, IF, IP
Species specificity:	Human, Mouse, Rat; other species not tested.
Calculated TPM2 MW:	33 kDa
Observed TPM2 MW:	29-33 kDa
Positive WB detected in	Mouse skeletal muscle tissue
Positive IP detected in	Mouse skeletal muscle tissue
Positive IHC detected in	Human breast cancer tissue, human colon tissue, human heart tissue, human skeletal muscle tissue
Positive IF detected in	HepG2 cells
Recommended dilution:	WB: 1:200-1:2000
	IP: 1:200-1:2000
	IHC: 1:20-1:200
	IF: 1:10-1:100

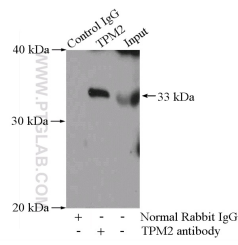
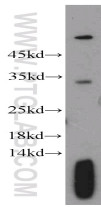
Application key: WB = Western blotting, IHC = Immunohistochemistry, IF = Immunofluorescence, IP = Immunoprecipitation

### Immunogen information

Immunogen:	Ag1508
GenBank accession number:	BC011776
Gene ID (NCBI):	7169
Full name:	Tropomyosin 2 (beta)

### Product information

Purification method:	Antigen affinity purification
Storage:	PBS with 0.1% sodium azide and 50% glycerol pH 7.3. Store at -20°C.



mouse skeletal muscle tissue  
 were subjected to SDS PAGE  
 followed by western blot with  
 11038-1-AP(TPM2 antibody)  
 at dilution of 1:600

IP Result of anti-TPM2  
 (IP:11038-1-AP, 4ug;  
 Detection:11038-1-AP 1:500)  
 with mouse skeletal muscle  
 tissue lysate 3600ug.