

RALA Polyclonal Antibody

Catalog number: 13629-1-AP

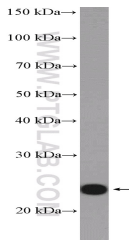
Size: 30 µg/150 µl

Source: Rabbit

Isotype: IgG

Synonyms:

RALA; RAL, RALA, Ras related protein Ral A



mouse brain tissue were subjected to SDS PAGE followed by western blot with 13629-1-AP(RALA Antibody) at dilution of 1:1000

Background

RALA belongs to the small GTPase superfamily. Multifunctional GTPase involved in a variety of cellular processes including gene expression, cell migration, cell proliferation, oncogenic transformation and membrane trafficking. RALA plays a role in the early stages of cytokinesis and is required to tether the exocyst to the cytokinetic furrow. The RALA-exocyst complex regulates integrin-dependent membrane raft exocytosis and growth signaling. As an effector of the proto-oncogene Ras, it play an important role in the molecular pathology of human malignancies.

Applications

Tested applications:	ELISA, WB
Cited applications:	WB
Species specificity:	Human,Mouse,Rat; other species not tested.
Cited species:	Human
Calculated RALA MW:	206aa,24 kDa
Observed RALA MW:	24 kDa
Positive WB detected in	Mouse brain tissue, fetal human brain tissue, human brain tissue, MCF-7 cells, rat brain tissue
Recommended dilution:	WB: 1:500-1:5000

Application key: WB = Western blotting, IHC = Immunohistochemistry, IF = Immunofluorescence, IP = Immunoprecipitation

Immunogen information

Immunogen:	Ag4547
GenBank accession number:	BC039858
Gene ID (NCBI):	5898
Full name:	V-ral simian leukemia viral oncogene homolog A (ras related)

Product information

Purification method:	Antigen affinity purification
Storage:	PBS with 0.02% sodium azide and 50% glycerol pH 7.3. Store at -20°C.