

CHD9 Polyclonal Antibody

Catalog number: 13402-1-AP

Size: 75 µg/150 µl

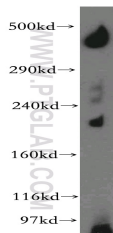
Source: Rabbit

Isotype: IgG

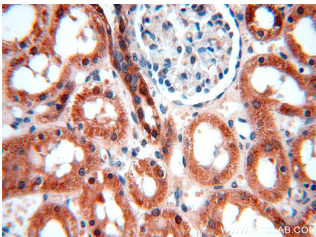
Synonyms:

CHD9; AD013; CReMM; KISH2;

PRIC320



human brain tissue were subjected to SDS PAGE followed by western blot with 13402-1-AP(CHD9 Antibody) at dilution of 1:1000



Immunohistochemistry of paraffin-embedded human kidney using 13402-1-AP(CHD9 Antibody) at Dilution 1:100 (under 40x lens)

Applications

Tested applications:	ELISA, WB, IHC
Species specificity:	Human, mouse, rat; other species not tested.
Positive WB detected in:	Human brain tissue
Calculated CHD9 MW:	2897aa,326kd
Observed CHD9 MW:	330kd
Positive IHC detected in:	Human kidney
Recommended dilution:	WB: 1:500-1:5000 IHC: 1:50-1:200

Application key: WB = Western blotting, IHC = Immunohistochemistry, IF = Immunofluorescence, IP = Immunoprecipitation, FC = Flow cytometry

Immunogen information

Immunogen:	Ag4245
GenBank accession number:	BC033770
Gene ID (NCBI):	80205
Full name:	Chromodomain helicase DNA binding protein 9

Product information

Purification method:	Antigen affinity purification
Storage:	PBS with 0.02% sodium azide and 50% glycerol pH 7.3. Store at -20°C.