

RHOC Polyclonal Antibody

Catalog number: 10632-1-AP

Size: 30 µg/150 µl

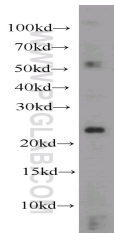
Source: Rabbit

Isotype: IgG

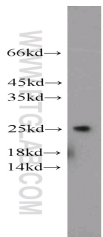
Synonyms:

RHOC; ARH9, ARHC, H9, Rho

cDNA clone 9, RHOC, RHOH9



HeLa cells were subjected to SDS PAGE followed by western blot with 10632-1-AP(RHOC antibody) at dilution of 1:500



NIH/3T3 cells were subjected to SDS PAGE followed by western blot with 10632-1-AP(RHOC antibody) at dilution of 1:500

Background

Ras homolog family member C (RHOC) encodes a Rho-related GTP-binding protein, which belongs to small GTPase superfamily and also Rho family. RHOC. Regulates a signal transduction pathway linking plasma membrane receptors to the assembly of focal adhesions and actin stress fibers. Expression of RHOC contributes to metastatic phenotype of melanoma cells and is associated with multiple cancers including gastric carcinomas, ovarian carcinomas and breast cancer as well.

Applications

Tested applications:	ELISA, WB
Cited applications:	WB
Species specificity:	Human, Mouse, Rat; other species not tested.
Cited species:	Human
Calculated RHOC MW:	22 kDa
Observed RHOC MW:	22 kDa
Positive WB detected in	HeLa cells, C6 cells, NIH/3T3 cells
Recommended dilution:	WB: 1:200-1:2000

Application key: WB = Western blotting, IHC = Immunohistochemistry, IF = Immunofluorescence, IP = Immunoprecipitation

Immunogen information

Immunogen:	Ag0988
GenBank accession number:	BC007245
Gene ID (NCBI):	389
Full name:	Ras homolog gene family, member C

Product information

Purification method:	Antigen affinity purification
Storage:	PBS with 0.1% sodium azide and 50% glycerol pH 7.3. Store at -20°C.