

PPP2R2C Polyclonal Antibody

Catalog number: 12747-1-AP

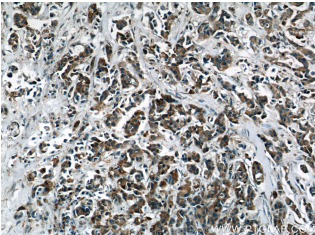
Size: 50 µg/150 µl

Source: Rabbit

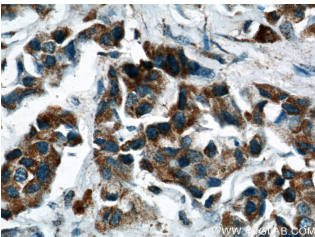
Isotype: IgG

Synonyms:

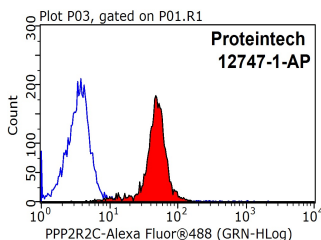
PPP2R2C; B55 GAMMA,
IMYPNO, IMYPNO1, PP2A
subunit B isoform gamma,
PPP2R2C, PR52, PR55G



Immunohistochemical of paraffin-embedded human breast cancer using 12747-1-AP (PPP2R2C antibody) at dilution of 1:50 (under 10x lens)



Immunohistochemical of paraffin-embedded human breast cancer using 12747-1-AP (PPP2R2C antibody) at dilution of 1:50 (under 40x lens)



1X10⁶ MCF-7 cells were stained with 0.2µg PPP2R2C antibody (12747-1-AP, red) and control antibody (blue). Fixed with 90% MeOH blocked with 3% BSA (30 min). Alexa Fluor 488-conjugated AffiniPure Goat Anti-Rabbit IgG(H+L) with dilution 1:1500.

Applications

Tested applications:	ELISA, IHC, WB, FC
Species specificity:	Human, Mouse, Rat; other species not tested.
Cited species:	Human
Calculated PPP2R2C MW:	430aa, 49 kDa
Observed PPP2R2C MW:	49kd
Positive WB detected in	HeLa cells, MCF7 cells, mouse testis tissue
Positive IHC detected in	Human breast cancer tissue, human brain tissue, human testis tissue
Positive FC detected in	MCF-7 cells
Recommended dilution:	WB: 1:500-1:5000 IHC: 1:20-1:200 FC: N/A

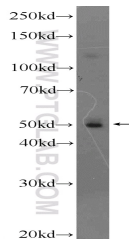
Application key: WB = Western blotting, IHC = Immunohistochemistry, IF = Immunofluorescence, IP = Immunoprecipitation

Immunogen information

Immunogen:	Ag3470
GenBank accession number:	BC032954
Gene ID (NCBI):	5522
Full name:	Protein phosphatase 2 (formerly 2A), regulatory subunit B, gamma isoform

Product information

Purification method:	Antigen affinity purification
Storage:	PBS with 0.1% sodium azide and 50% glycerol pH 7.3. Store at -20°C.



HeLa cells were subjected to SDS PAGE followed by western blot with 12747-1-AP(PPP2R2C Antibody) at dilution of 1:1000